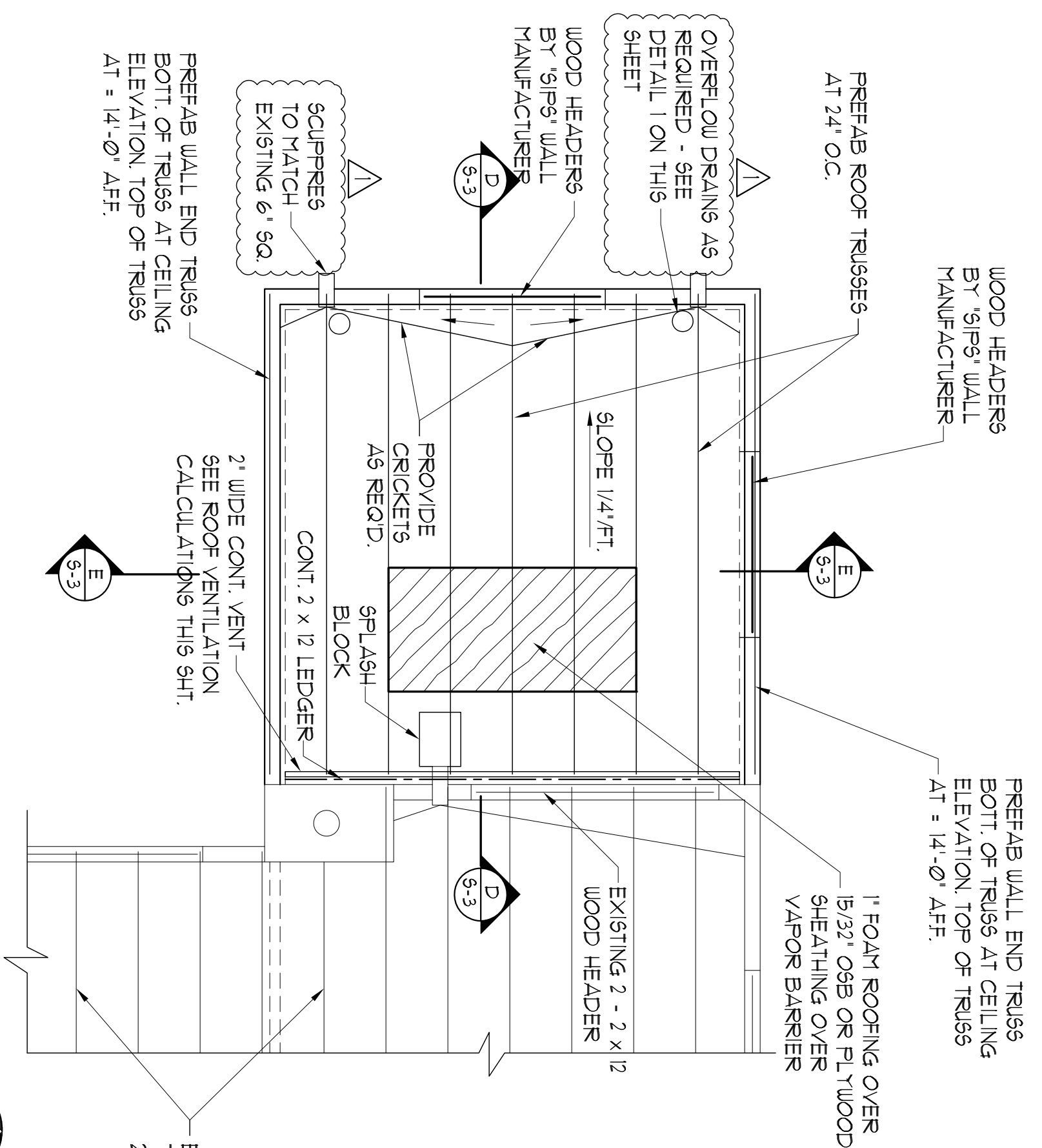


NOTE: VERIFY ROOF SLOPE BEFORE ORDERING PREFAB ROOF TRUSSES

NOTE: VERIFY ROOF SPAN BEFORE ORDERING PREFAB ROOF TRUSSES



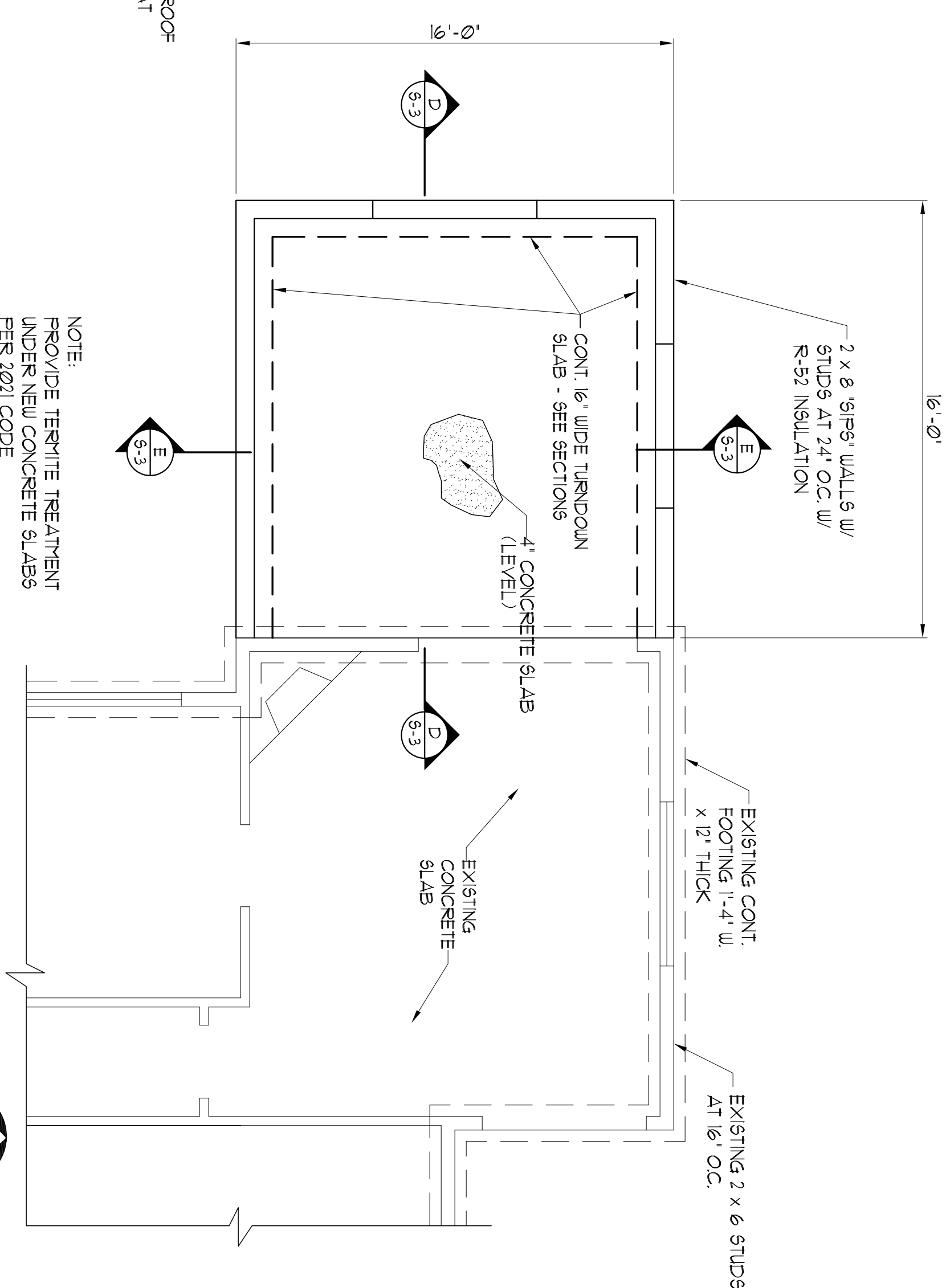
ROOF FRAMING PLAN - ROOM ADDITION

1/4" = 1'-0"

ROOF VENTING FOR FLAT ROOFS:

LONGEST ROOF SPAN (AT GUEST QUARTERS) IS 23 FT. 23 FT. x 216" IN. x 22.5" IN. (BETWEEN JOISTS) = 620" SQ. IN. DIVIDED BY 150" = 41.4" SQ. INCHES (MAX.) FOR REQUIRED VENTILATION AT LONGEST BAY CONDITION

2" WIDE CONT. VENT x 22.5" = 45" SQ. PROVIDED PER TRUSS BAY

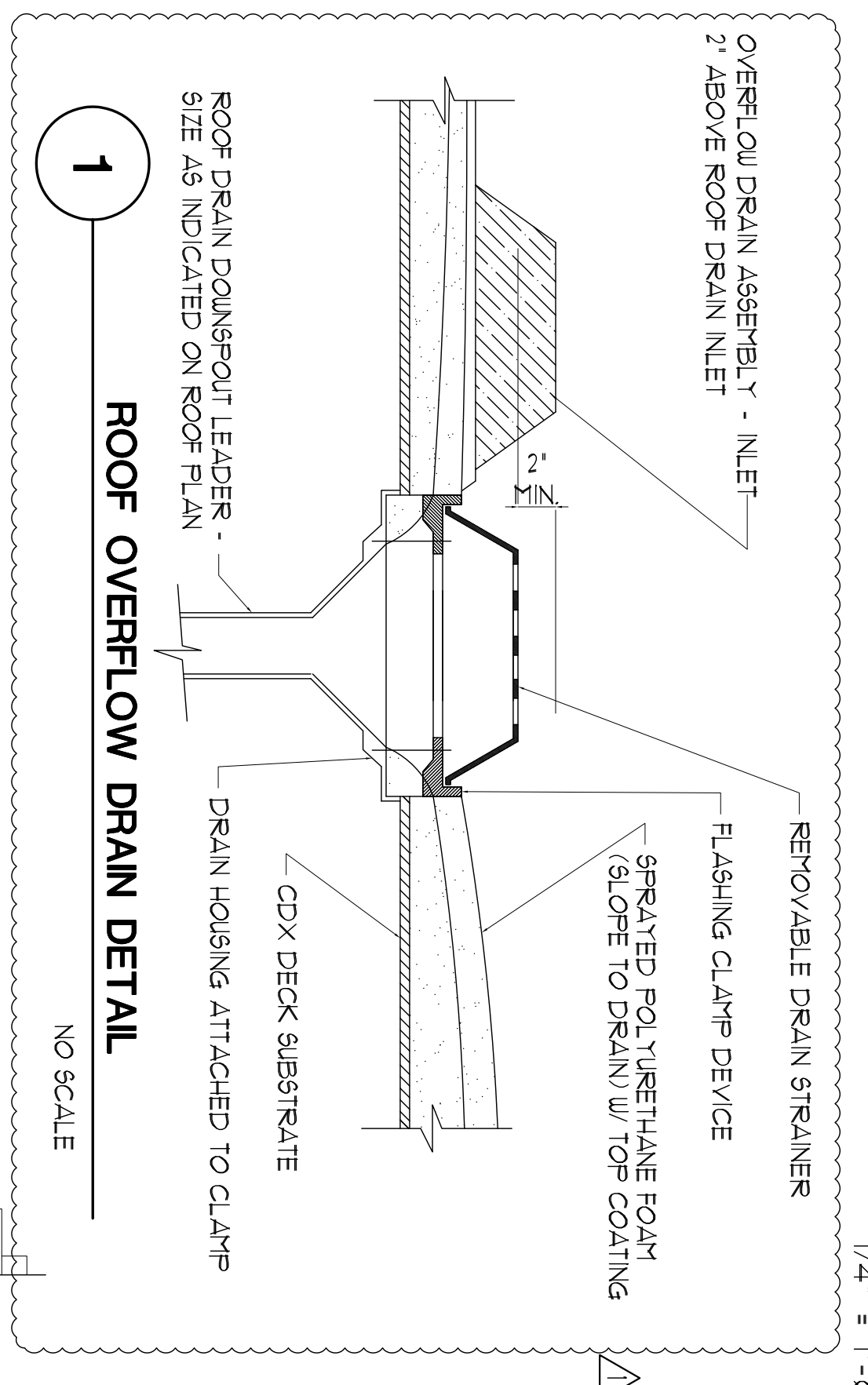
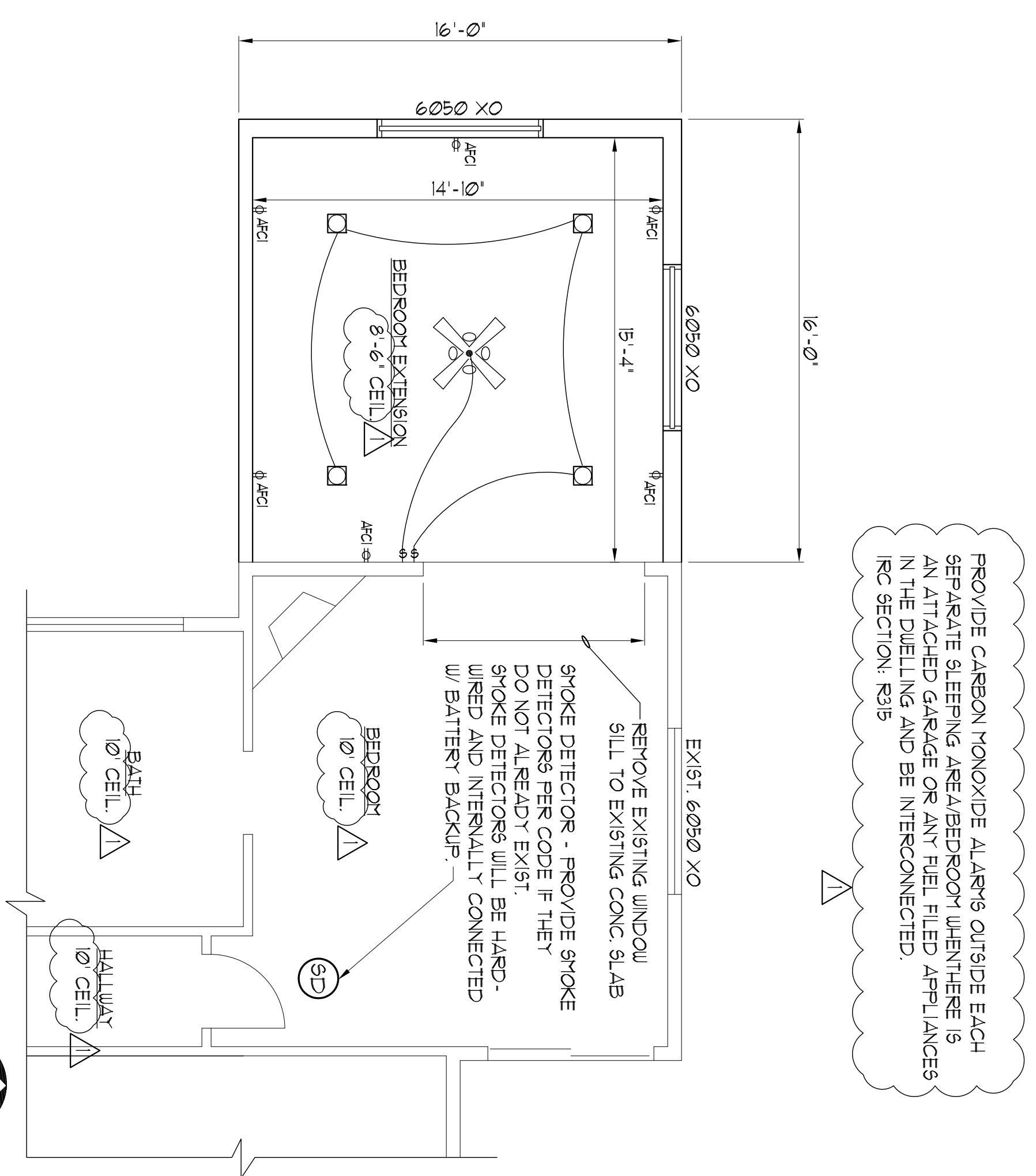


FOUNDATION PLAN - ROOM ADDITION

1/4" = 1'-0"

FLOOR/ELECTRICAL PLAN - ROOM ADDITION

1/4" = 1'-0"

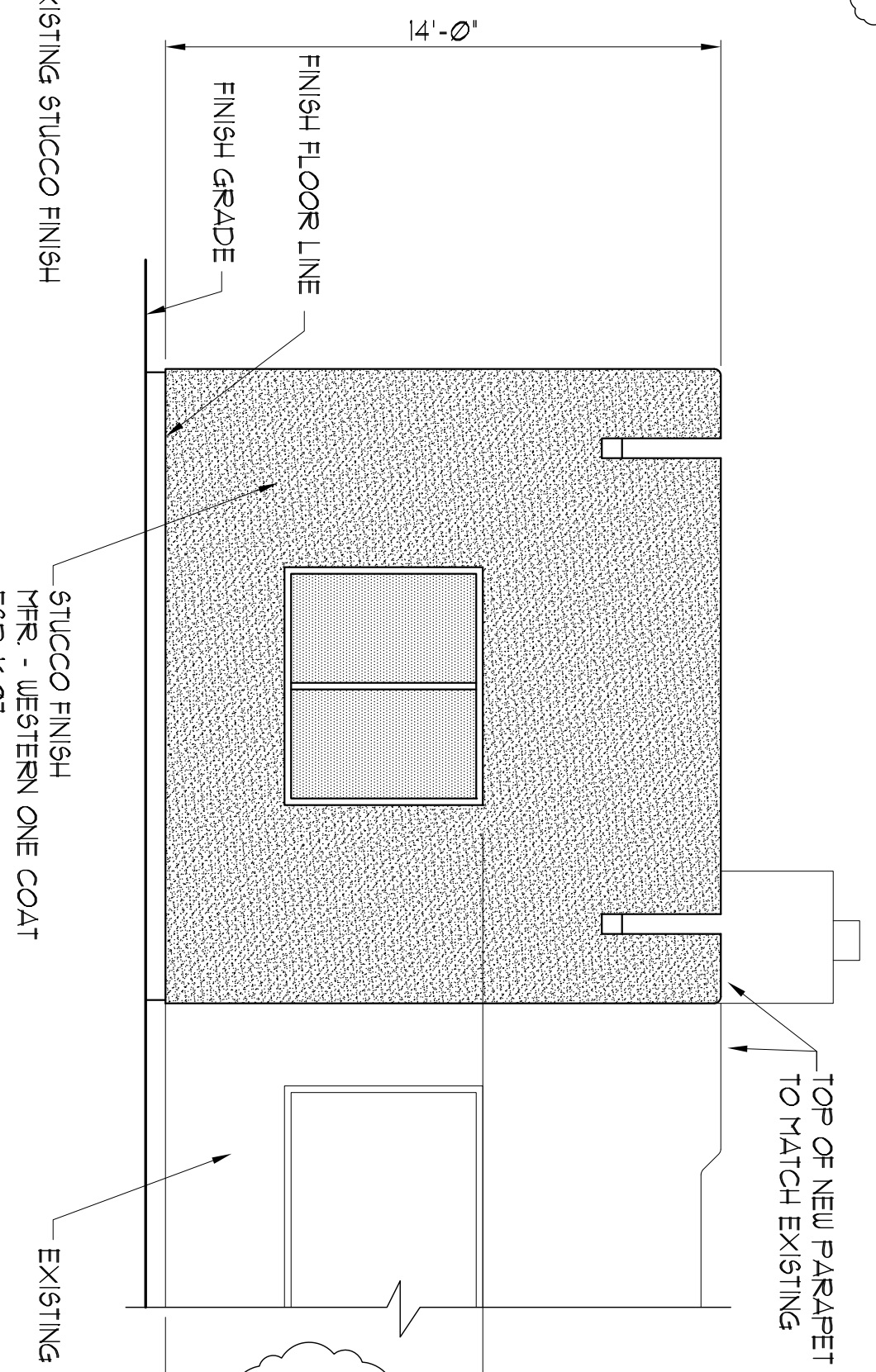
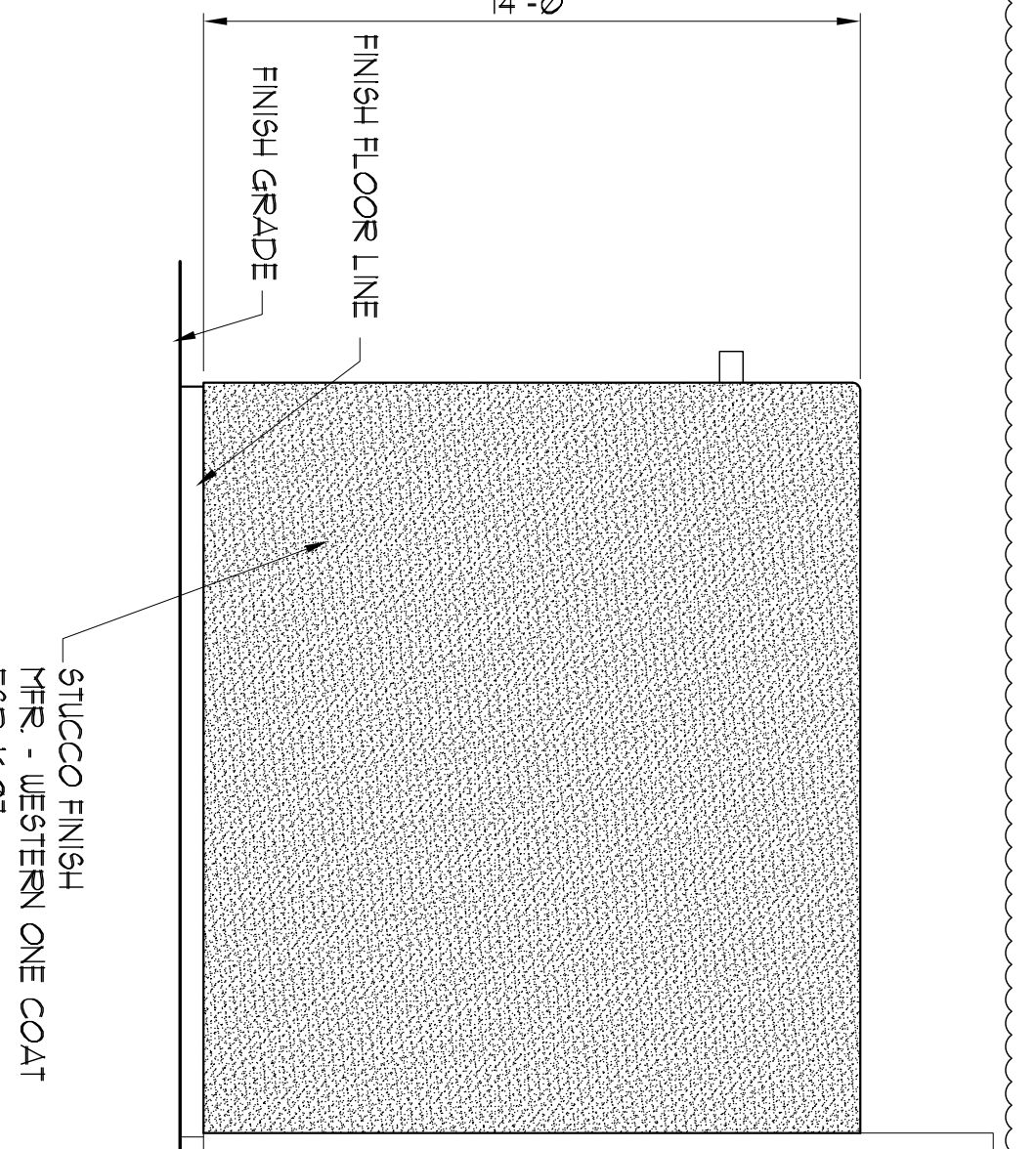
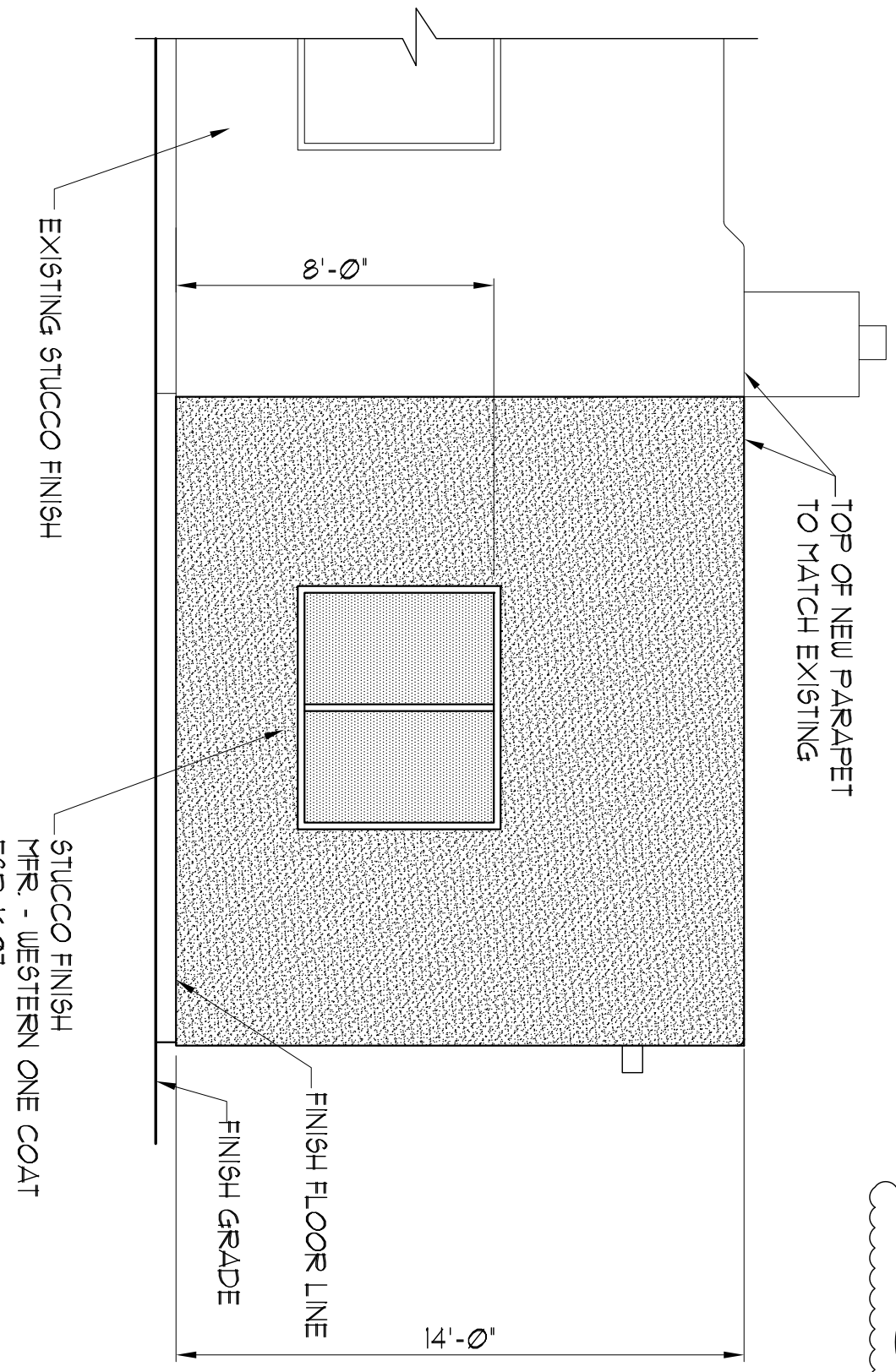


1/4" = 1'-0"

FIGURE LEGEND

NOTE: EXTERIOR FIXTURES NOT COVERED SHALL HAVE FULL HORIZONTAL CUTOFF AND DIRECTED DOWNWARD

	CARBON MONOXIDE ALARM AS PER 2021 IRC 106.11		ELECTRICAL PANEL
	SMOKE DETECTOR		LIGHT SWITCH
	CARBON MONOXIDE W/ GAS APPLIANCES		3 OR 4 WAY SWITCH
	CEILING FAN/LIGHTS		LIGHT FIXTURE
	110V ELECTRICAL OUTLET		PENDANT LIGHT FIXTURE
	ARC FAULT CIRCUIT INTERRUPT		WEATHER PROOF LIGHT FIXTURE
	GROUND FAULT CIRCUIT INTERRUPT		RECESSED LIGHT FIXTURE TO BE I.C. RATED
	GROUND FAULT CIRCUIT INTERRUPT - WEATHERPROOF		RECESSED LIGHTING CANISTER MOISTURE PROOF
	DISPOSAL		EXHAUST FAN



NOTE: LIGHTEST LINES DENOTE EXISTING CONSTRUCTION.