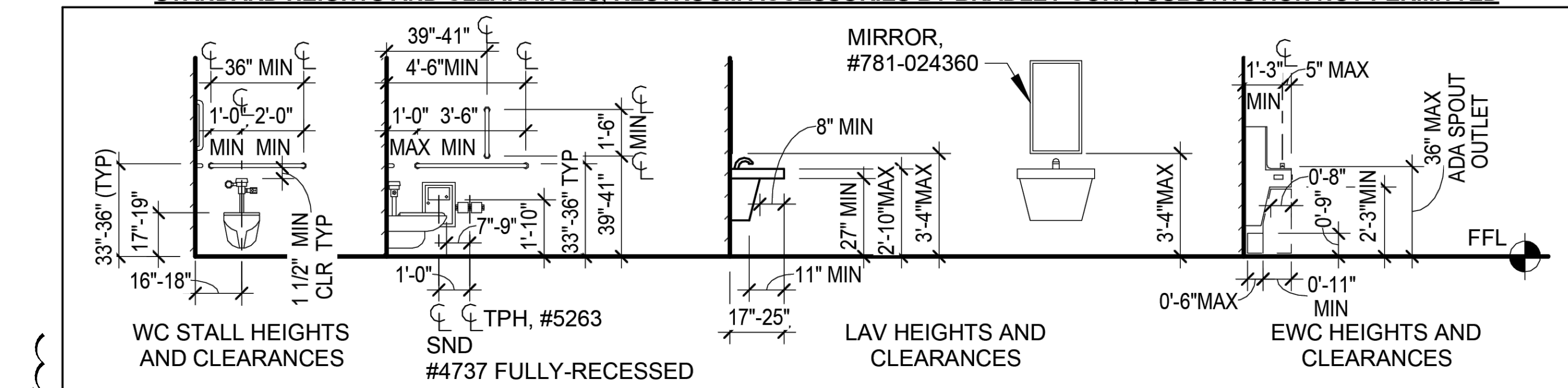


STANDARD HEIGHTS AND CLEARANCES. RESTROOM ACCESSORIES BY BRADLEY CORP. SUBSTITUTION NOT PERMITTED

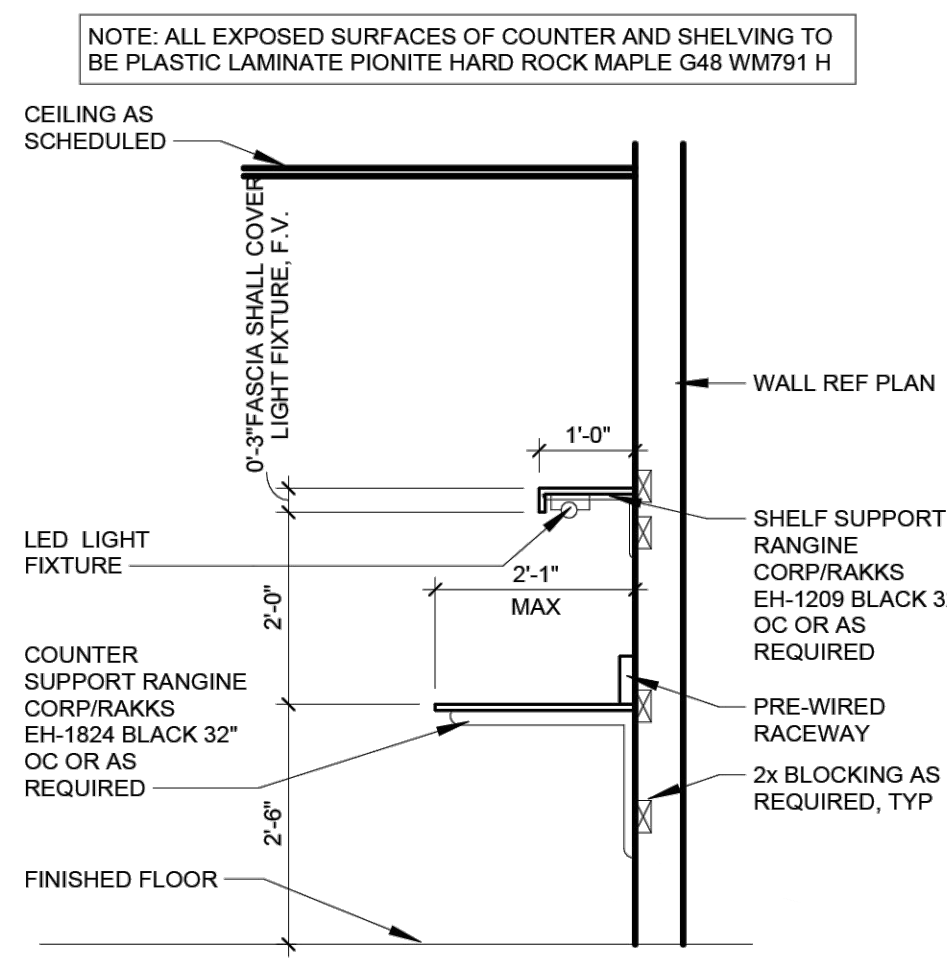


SYMBOLS LEGEND

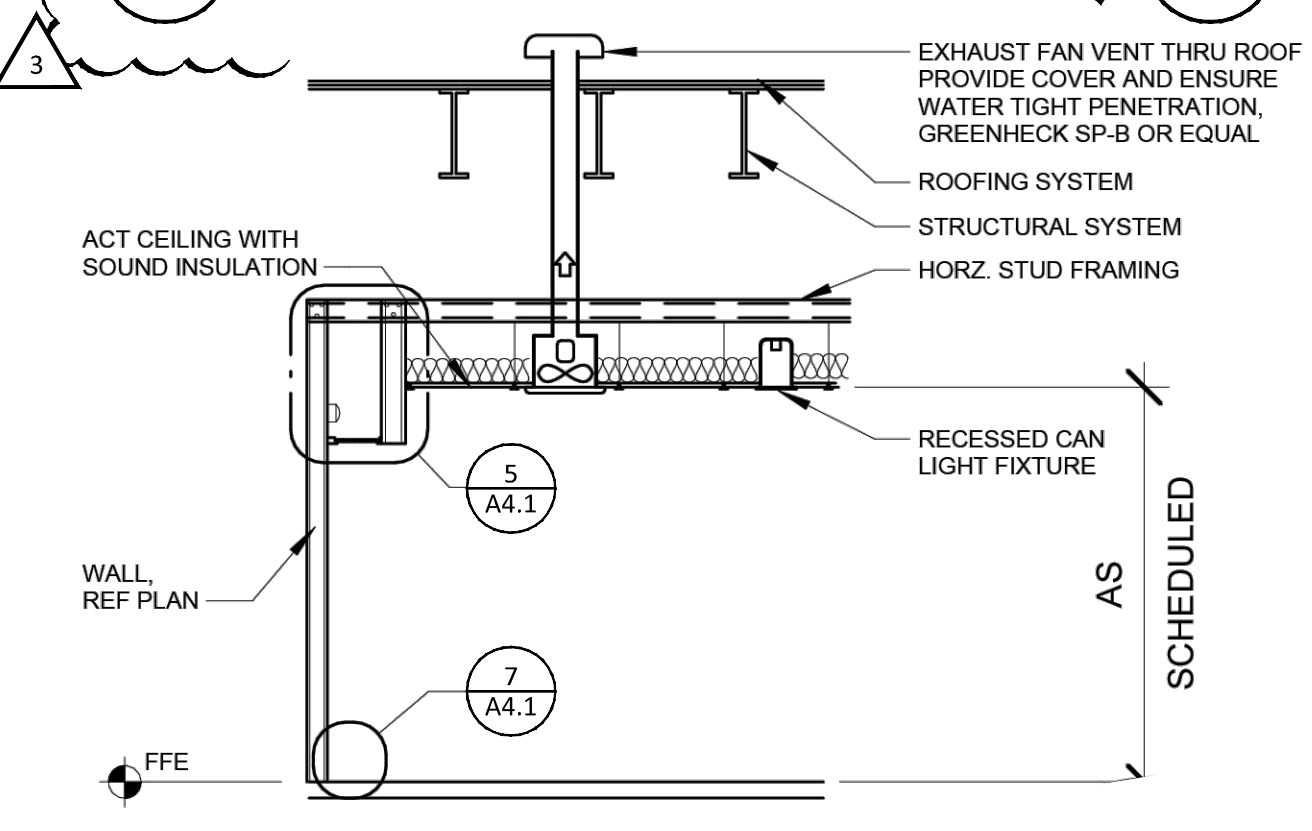
- ⊙ KEYNOTE TAG
- ⊙ DOOR TAG

KEYED NOTES

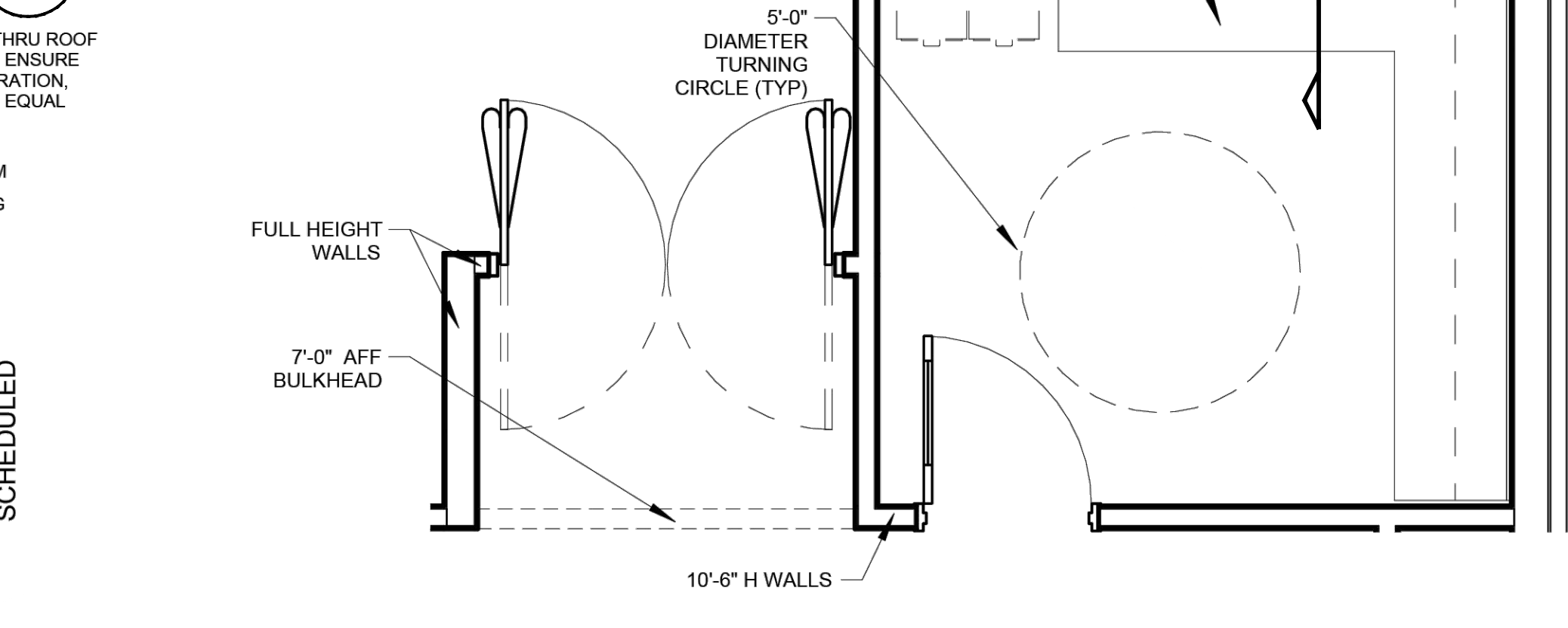
- GENERAL ITEMS**
1. 67" DIAMETER TURNING CIRCLE.
 2. 30"X52" CLEAR SPACE.
- CONTRACTOR FURNISH & INSTALL**
3. ACCESSIBLE SIGNAGE, RE: G7.1 & G7.2
 4. GRAB BARS, RE: G7.1 & G7.2 & 2/A4.1
 5. 18" VERTICAL GRAB BAR, RE: G7.1 & G7.2
 6. WATER AND DRAIN PIPE INSULATION, RE: G7.1 & G7.2
 7. 24" X 36" MIRROR WITH SMOOTH EDGES
 8. WATER CLOSET: COMMERCIAL HIGH EFFICIENCY, TOP SPUD, FLOOR MOUNTED WITH HIGH EFFICIENCY FLUSH VALVE, MAX 1.28 GPF, NON-HOLD OPEN HANDLE, RE: PLUMBING DWGS.
 9. NOT USED
 10. LAVATORY: AMERICAN STANDARD "COMRADE" O124.024.020 WHITE FAUCET; BRADLEY CORP 563-315 "AERADA 1200 SERIES CS FAUCET," RE: PLUMBING DRAWINGS.
 11. TOILET SEAT COVER DISPENSER
 12. SANITARY NAPKIN DISPOSAL
 13. DRINKING FOUNTAIN: ELKAY WALL MOUNT SOFT SIDES WITH WALL PLATE, NON-REFRIGERATED, NON-FILTERED, INSTALLED BARRIER FREE, ADAAG COMPLIANT OR EQUAL
- OWNER FURNISHED, INSTALL AS NOTED**
14. DASHED LINE INDICATES A CLEAR 56" X 60" FLOOR AREA
 15. SOAP DISPENSER, INSTALLED BY GENERAL CONTRACTOR.
 16. TOILET TISSUE DISPENSER, INSTALLED BY GENERAL CONTRACTOR.
 17. SURFACE MOUNT ELECTRICAL HAND DRYER, INSTALLED BY GENERAL CONTRACTOR.
 18. PORCELAIN WALL TILE
 19. NEW MOP SINK UNDER WALL MOUNTED WATER HEATER.



5 VALENCE DETAIL
SCALE: N.T.S.



8 COUNTER SECTION
SCALE: N.T.S.



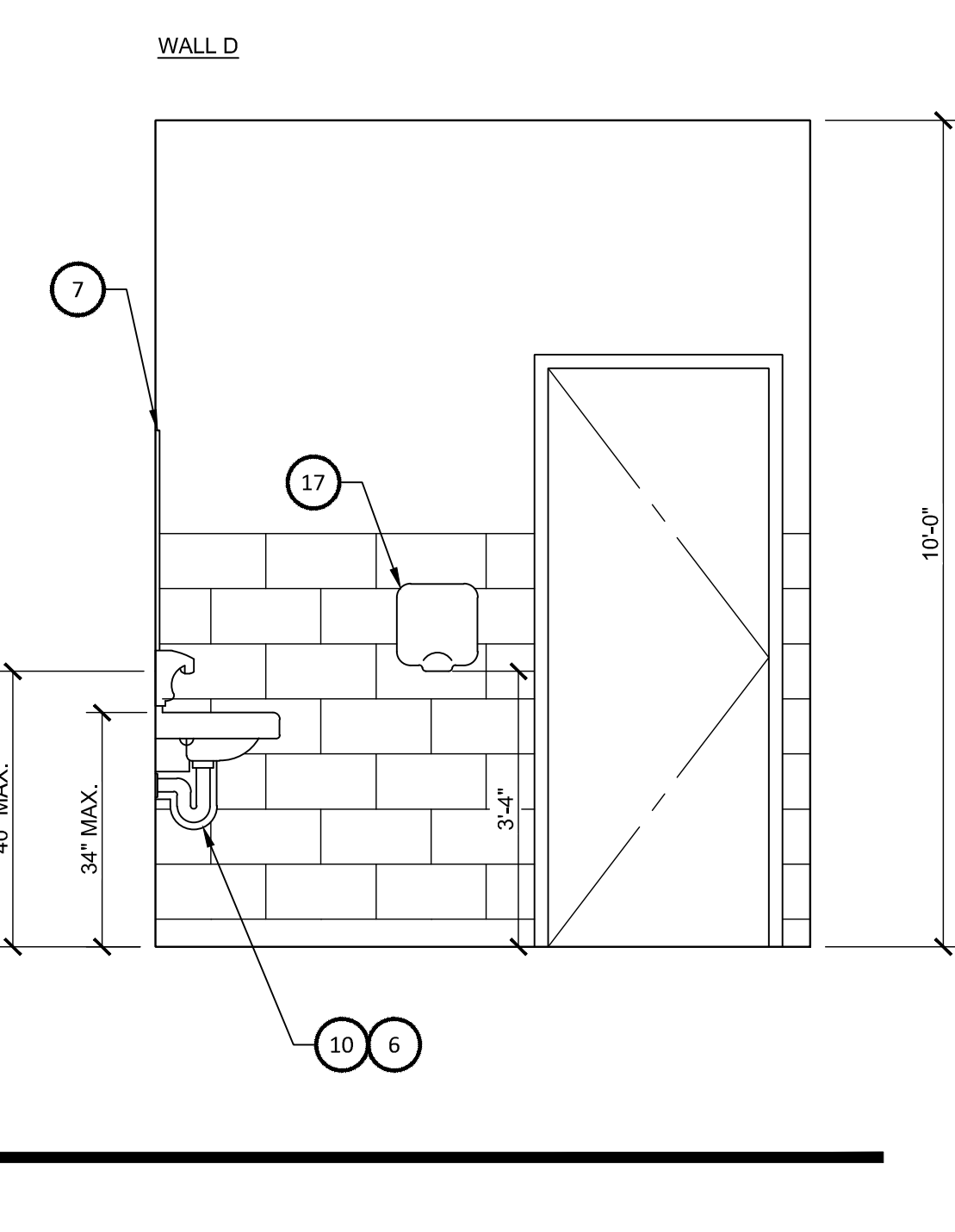
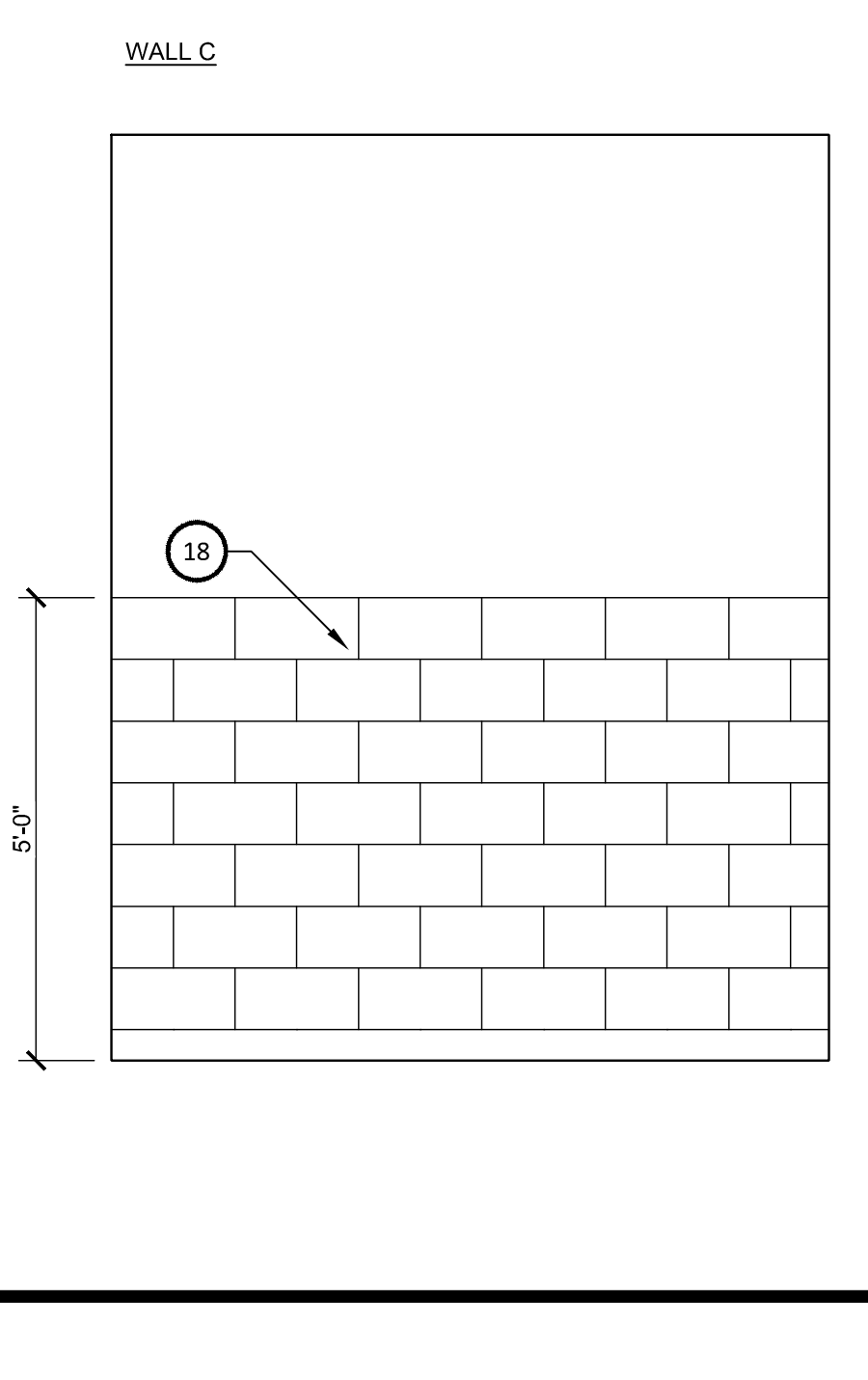
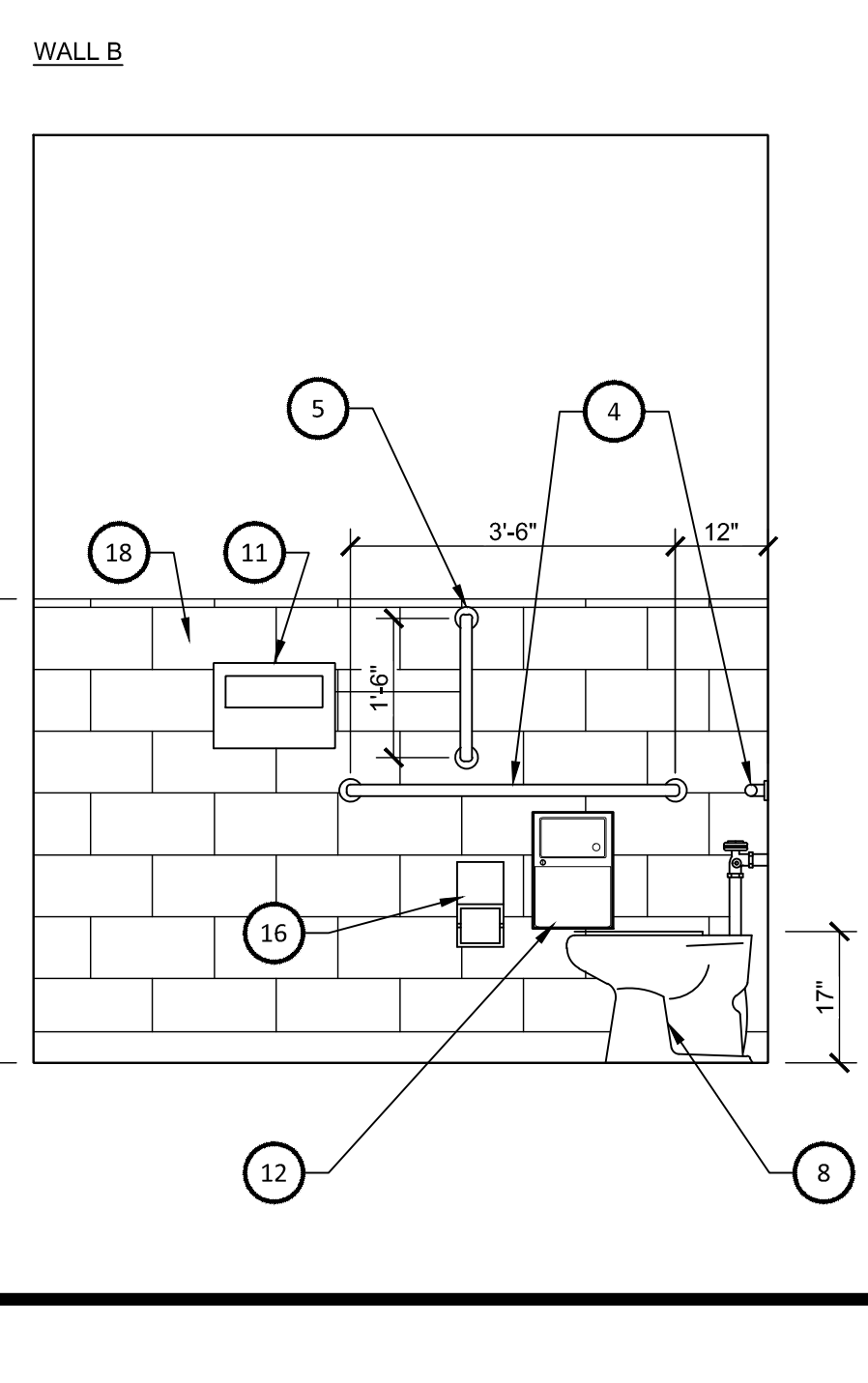
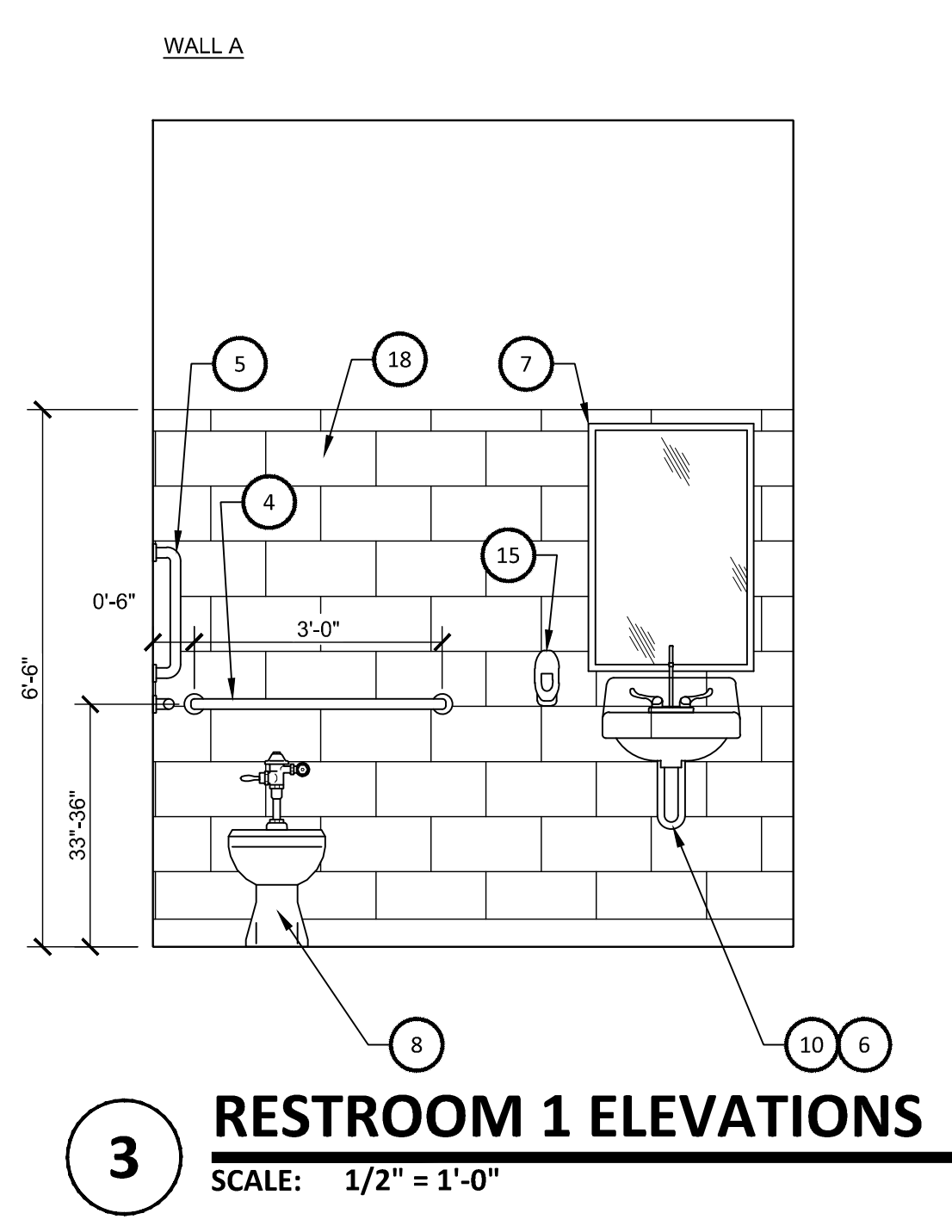
1 RESTROOMS & JANITOR ROOM
SCALE: 1/2" = 1'-0"

2 GRAB BAR SECTION
SCALE: N.T.S.

4 RESTROOM SECTION AND DETAIL
SCALE: N.T.S.

6 OFFICE PLAN
SCALE: N.T.S.

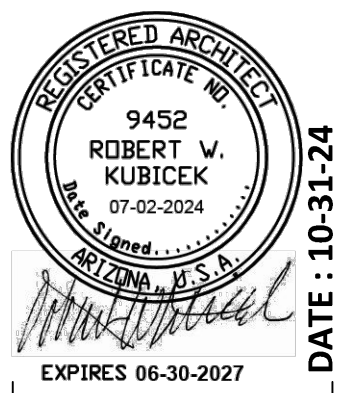
3 RESTROOM 1 ELEVATIONS
SCALE: 1/2" = 1'-0"



7 TILE COVE BASE
SCALE: 1/2" = 1'-0"



BRKAA
ARCHITECTS
2333 EAST THOMAS ROAD, PHOENIX, ARIZONA 85016
602-955-3900
RICALA.COM



EXPIRES: 06-30-2027
DATE: 10-31-24
ENLARGED PLAN
OWNER CHANGES: 08-22-24
CITY COMMENTS: 09-18-24
ADDITIONS: 10-10-24

NEW COMMERCIAL PAD
PAD 58 AT PASSEO UNDO SHOPPING CENTER
NEC OF ARIZONA AVE AND OCOILLO RD.
CHANDLER, AZ

CONSTRUCTION SET_11-12-24
design by: RH
drawn by: RL
checked by: RH

A4.1
project #: 23057