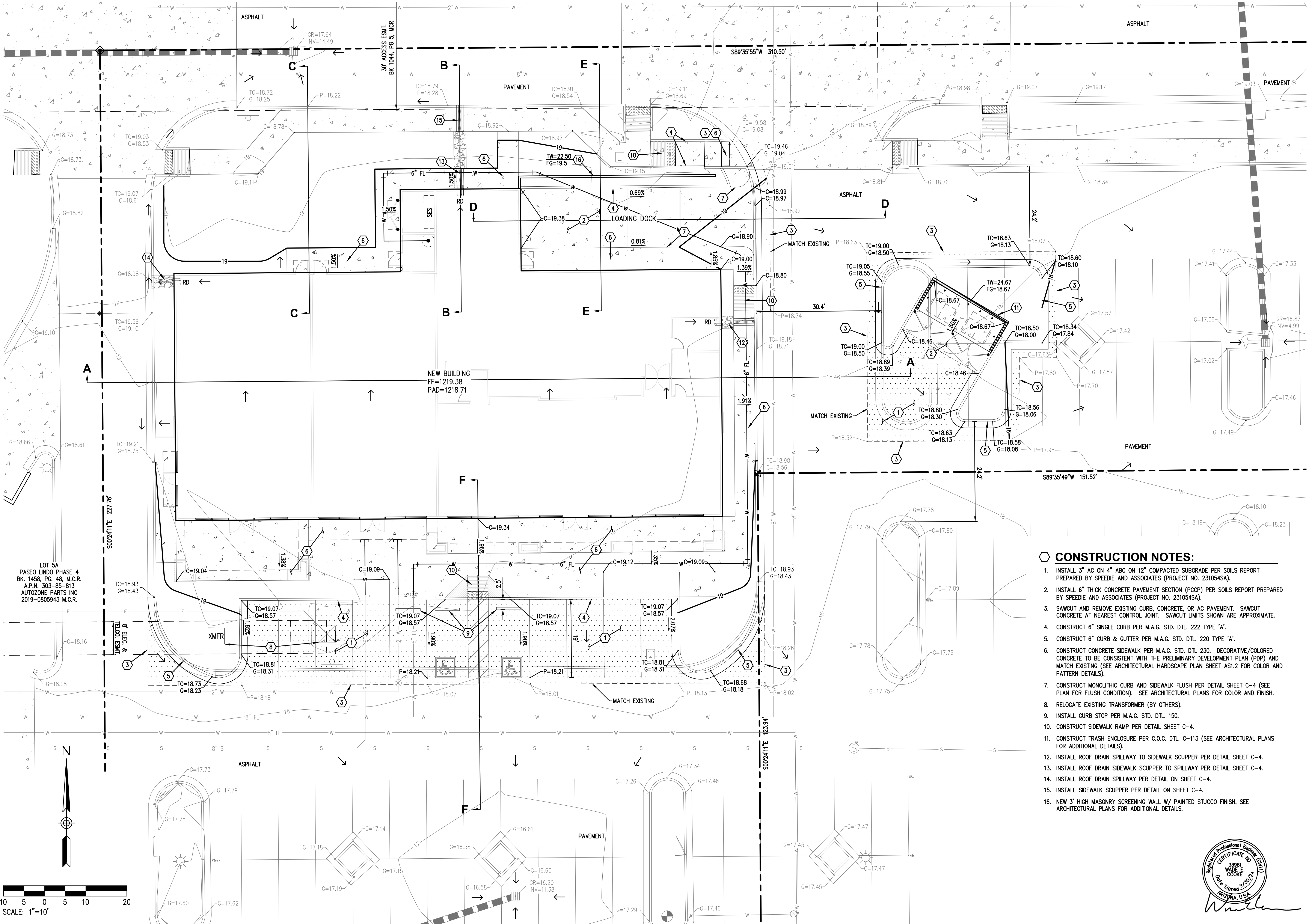


# GRADING & DRAINAGE PLAN



LOT 5A  
PASEO LINDO PHASE 4  
BK. 1458, PG. 48, M.C.R.  
A.P.N. 303-85-813  
AUTOZONE PARTS INC  
2019-0805943 M.C.R.

- CONSTRUCTION NOTES:**
- INSTALL 3" AC ON 4" ABC ON 12" COMPACTED SUBGRADE PER SOILS REPORT PREPARED BY SPEEDIE AND ASSOCIATES (PROJECT NO. 2310545A).
  - INSTALL 6" THICK CONCRETE PAVEMENT SECTION (PCCP) PER SOILS REPORT PREPARED BY SPEEDIE AND ASSOCIATES (PROJECT NO. 2310545A).
  - SAWCUT AND REMOVE EXISTING CURB, CONCRETE, OR AC PAVEMENT. SAWCUT CONCRETE AT NEAREST CONTROL JOINT. SAWCUT LIMITS SHOWN ARE APPROXIMATE.
  - CONSTRUCT 6" SINGLE CURB PER M.A.G. STD. DTL. 222 TYPE 'A'.
  - CONSTRUCT 6" CURB & GUTTER PER M.A.G. STD. DTL. 220 TYPE 'A'.
  - CONSTRUCT CONCRETE SIDEWALK PER M.A.G. STD. DTL. 230. DECORATIVE/COLORED CONCRETE TO BE CONSISTENT WITH THE PRELIMINARY DEVELOPMENT PLAN (PDP) AND MATCH EXISTING (SEE ARCHITECTURAL HARDSCAPE PLAN SHEET ASI.2 FOR COLOR AND PATTERN DETAILS).
  - CONSTRUCT MONOLITHIC CURB AND SIDEWALK FLUSH PER DETAIL SHEET C-4 (SEE PLAN FOR FLUSH CONDITION). SEE ARCHITECTURAL PLANS FOR COLOR AND FINISH.
  - RELOCATE EXISTING TRANSFORMER (BY OTHERS).
  - INSTALL CURB STOP PER M.A.G. STD. DTL. 150.
  - CONSTRUCT SIDEWALK RAMP PER DETAIL SHEET C-4.
  - CONSTRUCT TRASH ENCLOSURE PER C.O.C. DTL. C-113 (SEE ARCHITECTURAL PLANS FOR ADDITIONAL DETAILS).
  - INSTALL ROOF DRAIN SPILLWAY TO SIDEWALK SCUPPER PER DETAIL SHEET C-4.
  - INSTALL ROOF DRAIN SIDEWALK SCUPPER TO SPILLWAY PER DETAIL SHEET C-4.
  - INSTALL ROOF DRAIN SPILLWAY PER DETAIL ON SHEET C-4.
  - INSTALL SIDEWALK SCUPPER PER DETAIL ON SHEET C-4.
  - NEW 3' HIGH MASONRY SCREENING WALL W/ PAINTED STUCCO FINISH. SEE ARCHITECTURAL PLANS FOR ADDITIONAL DETAILS.



**CONSTRUCTION SET 11-12-24**

DATE:	
REVISIONS:	
TITLE:	DETAILED GRADING
DATE:	9/30/2024
PROJ. #:	2076
C-3	
3	OF 6

C.O.C. LOG NO. CIV24-0112