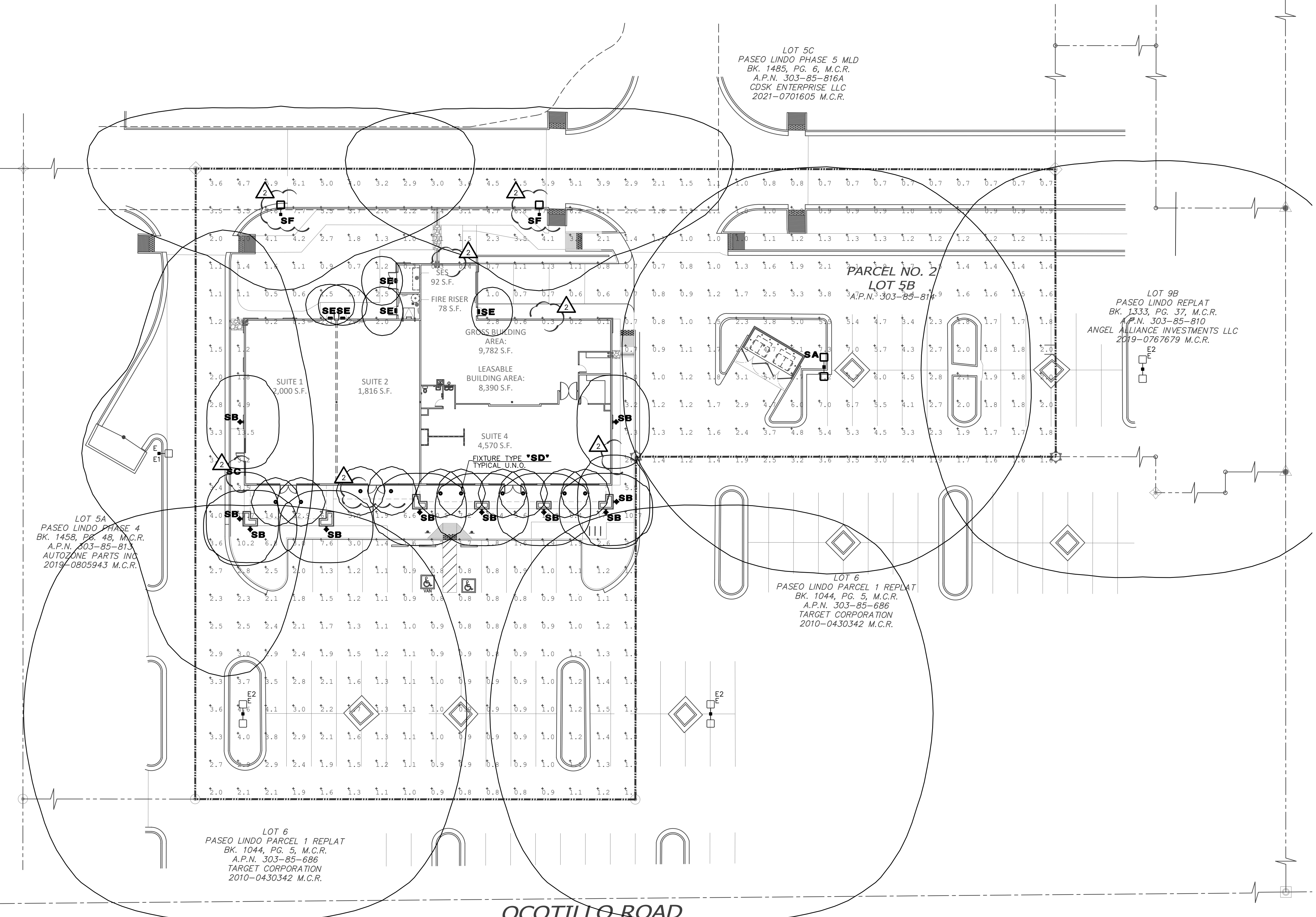


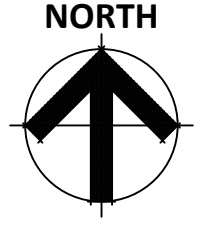
APPLEBY ROAD



OCOTILLO ROAD

(BASIS OF BEARINGS)

ELECTRICAL PRE CURFEW PHOTOMETRIC PLAN
1" = 20'-0"



LUMINAIRE SCHEDULE

1. PROVIDE 90-MINUTE EMERGENCY BATTERY BACK-UP FOR ALL EMERGENCY FIXTURES. SEE SCHEDULE BELOW FOR SPECIFICATIONS AND LUMEN REQUIREMENTS.

2. MODULAR WIRING SYSTEM FOR LIGHT FIXTURES IS AN ACCEPTABLE ALTERNATE.

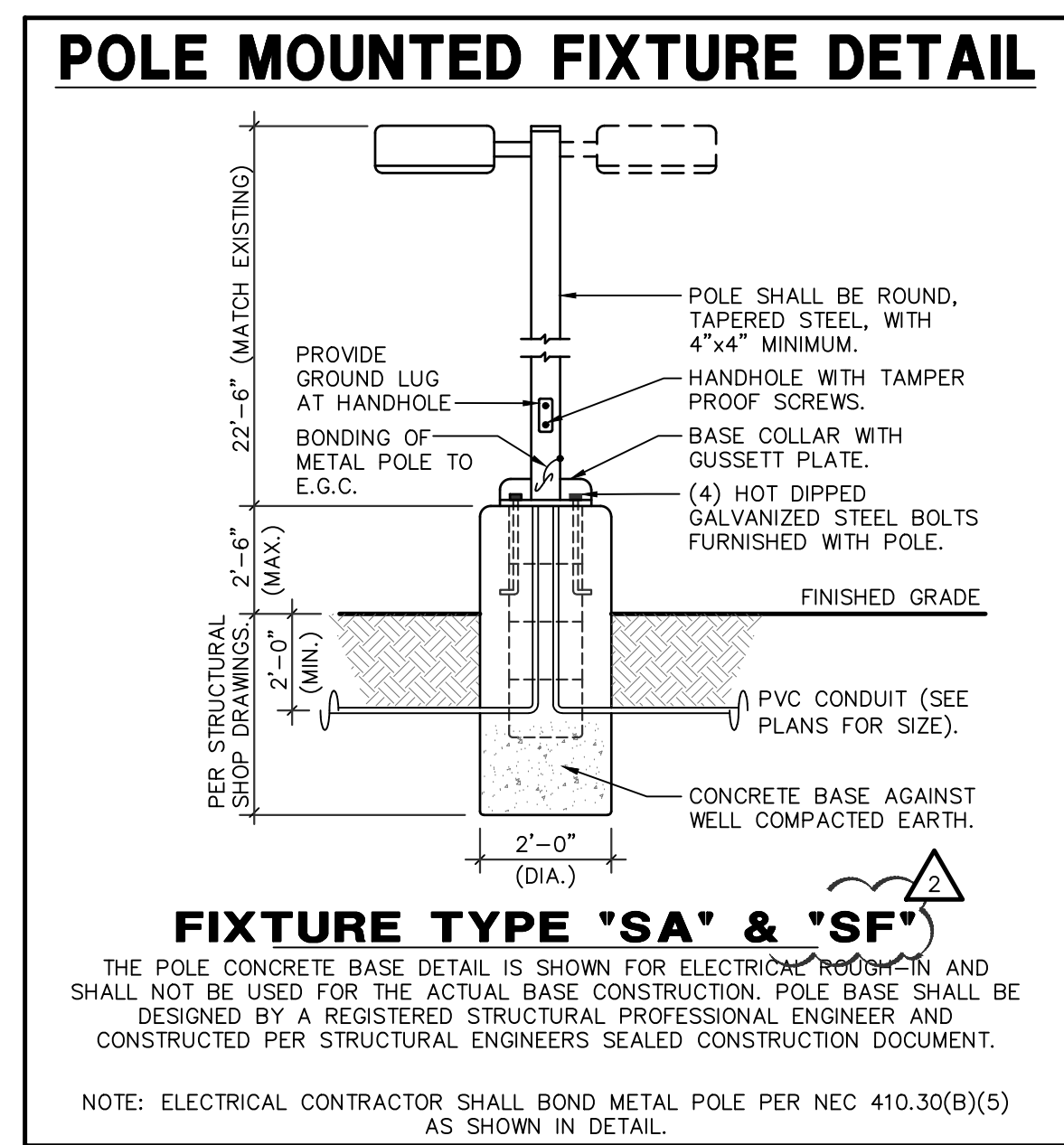
3. BASE BID FOR LUMINAIRES SHALL BE BASED ON MANUFACTURERS LISTED IN CONTRACT DOCUMENTS. UPON AWARD OF PROJECT, ALTERNATES PROPOSED BY CONTRACTOR SHALL BE SUBMITTED WITH WRITTEN OWNER APPROVAL & AN ITEMIZED REDUCT TO BASE BID.

4. ALTERNATE FIXTURE SELECTIONS MAY REQUIRE ADDITIONAL TIME FOR SUBMITTAL REVIEW & POSSIBLE ENGINEERING DESIGN CHANGES TO BE BILLED TO THE CONTRACTOR.

5. PROVIDE MINIMUM 10 MINUTE TIME DELAY ON EMERGENCY FIXTURES WHEN HID AREA LIGHTING IS USED.

MARK	MANUFACTURER MODEL NUMBER	VOLTS	LAMPS CRI/CCT INPUT WATTS	REMARKS/MOUNTING
SA	Visionaire Lighting LLC AMB-2-L T5WR 144LC 3 4K	120V	LED'S 155W	DUAL HEAD SITE POLE AT 25'A.F.G.
SB	LUMINAIRE SPCB 24IN 25W 40K CLP	120V	LED'S 27W	WALLPACK MOUNTED AT 7'A.F.G.
SC	NOT USED			
SD	PRESCOLITE LFR-6RDS-M-15L40R8WD -DM1 LFR-6RDS-T-S	120V	LED'S 13W	CANOPY DOWN LIGHT MOUNTED AT 10'A.F.G. PROVIDE WITH EMERGENCY BATTERY BACK UP WHERE NOTED "SD".
SE	DUAL LITE PGN	120V	LED'S 18W	EXTERIOR EMERGENCY EGRESS FIXTURE MOUNTED ABOVE DOOR.
SF	SIGNIFY CANADA DMS55	120V	LED'S 138W	SITE POLE AT 25'A.F.G.

NOTES:
1. ALL EXTERIOR FIXTURES SHALL HAVE INTEGRAL OCCUPANCY SENSORS & PHOTOCELLS PER IECC 2021 C405.2.7.3 EXTERIOR LIGHTING CONTROLS.
2. VERIFY EXACT FINISH/COLOR OF ALL EXTERIOR FIXTURES WITH ARCHITECT/SHOPPING CENTER STANDARDS PRIOR TO ORDERING.



NOTE:
NEW SITE POLE SHALL MATCH SHOPPING CENTER STANDARDS.

EXTERIOR IECC WATT PER SQUARE FOOT COMPLIANCE

WATTS USED	DESIGNATION	QUANTITY	WATTS	SUB-TOTAL W
WATTS USED	SA	1 x	155	155 W
	SB	10 x	27	270 W
	SD	10 x	13	130 W
	SE	5 x	18	90 W
	SF	2 x	138	276 W
TOTAL WATTS USED =				949 W
WATTS ALLOWED - TRADEABLE AREA				
PARKING LOTS		42605	x 0.15W/s.f.	6390 W
TOTAL TRADEABLE WATTS ALLOWED =				6390 W
COMPLIANCE				
TOTAL WATTS ALLOWED				= 6390 W
TOTAL WATTS USED				= 949 W
TOTAL COMPLIANCE BY				= 5441 W

TABLE PROVIDED AS COMPLIANCE MATERIAL TO MEET IECC POWER ALLOWANCE. METHOD IS ACCEPTABLE PER IECC C101.5.1

Qty	Label	Symbol	MANUFAC	Description	MH	Lumens	LLF	Watts	Total Watts	BUG Rating
1	E1		EXISTING	ESTIMATED EXISTING	25'	17433	0.900	129.4	129.4	B3-U0-G3
3	E2		EXISTING	ESTIMATED EXISTING	25'	18643	0.900	129.4	776.4	B5-U0-G3
1	SA		Visionaire Lighting LLC	AMB-2-L T5WR 144LC 3 4K	25'	21770	0.900	153.9496	307.899	B4-U0-G3
10	SB		Luminaire LED	SPCB 24IN 25W 40K CLP	7'	2837	0.900	26.6	266	B1-U3-G1
10	SD		PRESCOLITE	LFR-6RDS-M-15L40R8WD-DM1 LFR-6RDS-T-S	10'	1488	0.900	12.273	122.73	B2-U0-G0
5	SE		DUAL-LITE	PGN	9'	445	0.900	17.7	88.5	B0-U1-G0
2	SF		SIGNIFY CANADA LTD	DMS55	25'	17694	0.900	138	276	B3-U0-G2

Calculation Summary		CalcType	Units	Avg	Max	Min	Avg/Min	Max/Min
Label	Site Planar	Illuminance	Fc	2.46	17.7	0.1	24.60	177.00

DESIGN CODES
IECC, 2021 NEC, 2020

ELECTRICAL CONTRACTOR SHALL NOTIFY DESIGNER/ENGINEER PRIOR TO ANY DEVIATION FROM THIS SET OF ELECTRICAL DESIGN PLANS. ANY CHANGES TO THE DESIGN, IF APPROVED BY ENGINEER, WILL REQUIRE REVISIONS TO PLANS AND POSSIBLE ADDITIONAL SERVICE FEE.

Project Contact/Designer: **MINDY ADLER**
Project # 24197

HAWKINS DESIGN GROUP INC.
ELECTRICAL CONSULTING ENGINEERS
140 WEST HARVELL ROAD
GILBERT, ARIZONA 85233
PH: 480.813.9000 FAX: 480.813.9001
EMAIL: central@hwdsg.com

design by: MA
drawn by: MA
checked by: AG

IF DRAWING IS NOT PLOTTED AT 24"x36" THEY ARE NOT FULL SIZE



IRKAA
ARCHITECTS
2333 EAST THOMAS ROAD, PHOENIX, ARIZONA 85016
602-955-3900



09.18.24 CITY COMMENTS:
ELECTRICAL PRE CURFEW

NEW COMMERCIAL PAD
PAD SB AT PASEO LINDO SHOPPING CENTER
NEC OF ARIZONA AVE AND OCOTILLO RD.
CHANDLER, AZ

CONSTRUCTION SET_11-12-24

project #: 23057

ES2.0