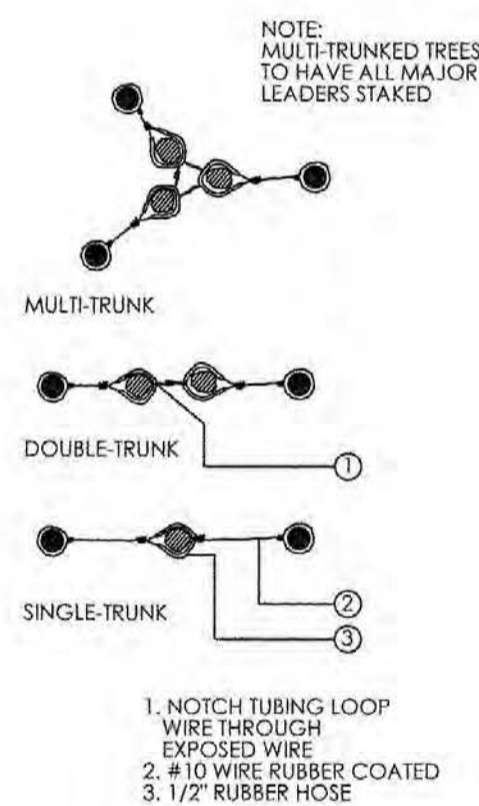


1. 1/2" RUBBER HOSE WITH #10 WIRE
 2. TWO 2" ROUND BY 10' LONG GREEN TREE STAKES BURY 3" BELOW GRADE
 3. 4" BASIN
 4. GRADE (PRIOR TO GRANITE)
 5. ROUGHEN SIDES OF PLANT PIT TO PREVENT GLAZING
 6. AGRIFORM TABLETS
 7. 2" DEPTH OF DECOMPOSED GRANITE. (SEE LEGEND FOR TYPE)
- BACKFILL PLANT PIT WITH SOIL MIX PER PHX MAG SUPPLEMENT.

DOUBLE STAKING DETAIL



NOT TO SCALE



NOTE: MULTI-TRUNKED TREES TO HAVE ALL MAJOR LEADERS STAKED

MULTI-TRUNK

DOUBLE-TRUNK

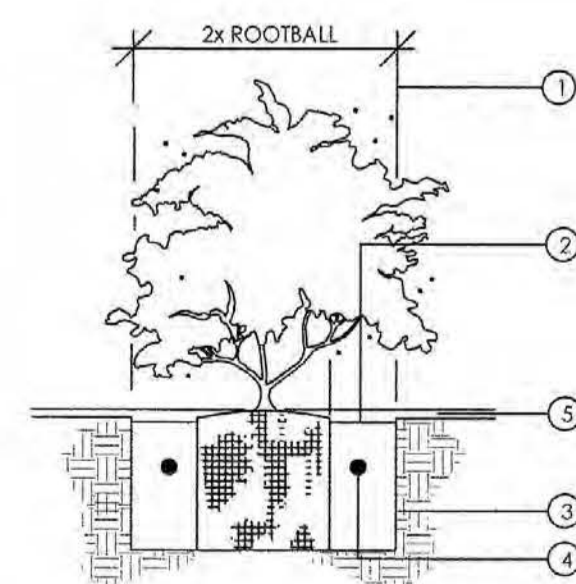
SINGLE-TRUNK

1. NOTCH TUBING LOOP WIRE THROUGH EXPOSED WIRE
2. #10 WIRE RUBBER COATED
3. 1/2" RUBBER HOSE

TREE GUYING DETAIL



NOT TO SCALE



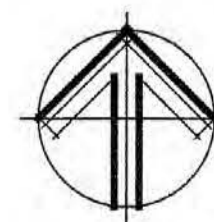
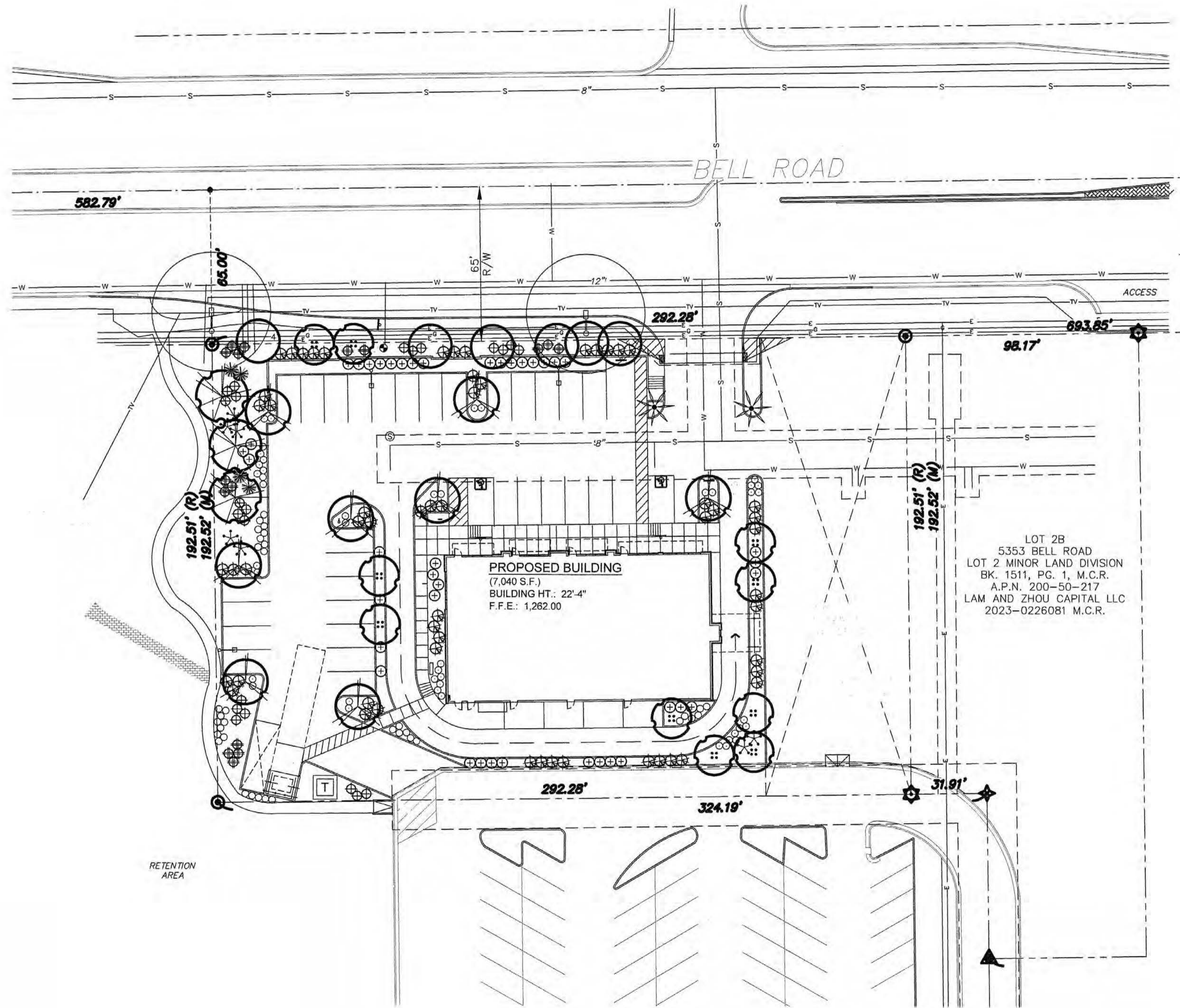
1. MINIMUM DIMENSION FOR 5 GAL. PLANTS
2. 1" BASIN
3. ROUGHEN SIDES OF PLANT PIT TO PREVENT GLAZING
4. AGRIFORM TABLETS SEE SPECS. FOR RATIO
5. 2" DEPTH OF DECOMPOSED GRANITE. (SEE LEGEND FOR TYPE)

BACKFILL PLANT PIT WITH SOIL MIX PER PHX MAG SUPPLEMENT.

SHRUB PLANTING DETAIL

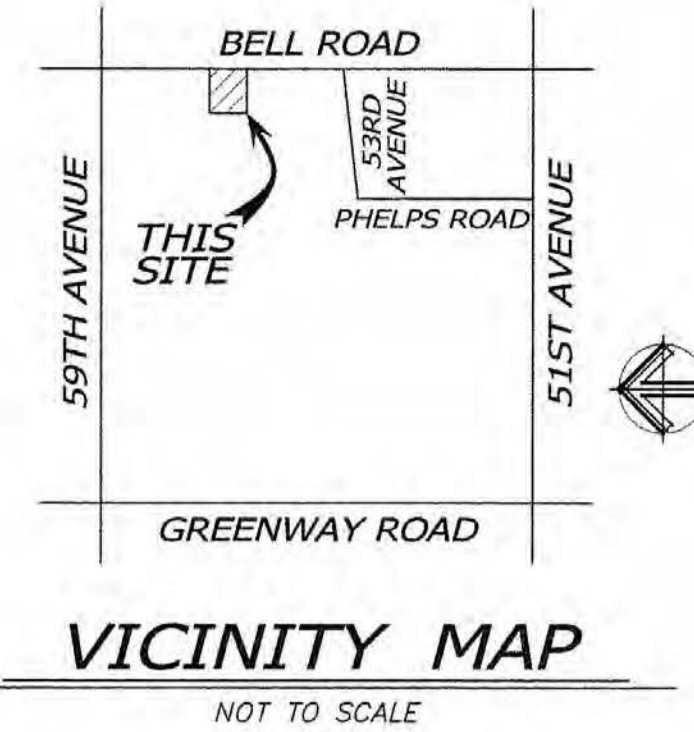


NOT TO SCALE



SITE PLAN

SCALE: 1" = 30'-0"
 30 0 30 60 90
 SCALE: 1" = 30'



VICINITY MAP

NOT TO SCALE

LANDSCAPE LEGEND

- TREES**
- CERCIDIUM 'HYBRID'
 - DESERT MUSEUM PALO VERDE
2" CALIP., 6.5T, 4.5W
 - PHOENIX DACTYLIFERA
DATE PALM (MATCHING)
20' T.F. DIAMOND CUT, STRAIGHT,
NO AERIAL ROOTS SHOWING.
 - QUERCUS VIRGINIANA
LIVE OAK
2" CALIP., 7T, 4W
 - ACACIA ANEURA
MULGA (SRP/APS APPROVED)
2" CALIP., 5.5T, 4W
 - LARGE SHRUBS**
 - TECOMA 'ORANGE JUBILEE'
ORANGE JUBILEE
5 GALLON
 - CAESALPINIA MEXICANA
MEXICAN BIRD OF PARADISE
5 GALLON
 - MEDIUM SHRUBS**
 - EREMOPHILA MACULATA
VALENTINE EMU BUSH
5 GALLON
 - LEUCOPHYLLUM FRUTESCENS
'GREEN CLOUD'
5 GALLON
 - ACCENTS**
 - HESPERALOE PARVIFLORA
RED YUCCA
5 GALLON
 - AGAVE DESMETTIANA
SMOOTH AGAVE
5 GALLON
 - DASYLIRON WHEELERII
DESERT SPOON
5 GALLON
 - GROUND COVER**
 - LANTANA MONTEVIDENSIS
'GOLD MOUND'
1 GALLON
 - LANTANA MONTEVIDENSIS
TRAILING PURPLE
1 GALLON
 - EREMOPHILA GLABRA
'MINGENEW GOLD'
5 GALLON

1/2" MINUS MADISON GOLD
DECOMPOSED GRANITE
2" DEPTH IN ALL LANDSCAPE AREAS



T.J. McQUEEN & ASSOCIATES, INC.

LANDSCAPE ARCHITECTURE
URBAN DESIGN
SITE PLANNING

10446 N. 74th Street, Suite 150
Scottsdale, Arizona 85258
P. (602) 265-0320

EMAIL: timmqueen@tjma.net



A NEW BUILDING FOR: KIWAMI ON BELL
 5327 W. BELL ROAD
 GLENDALE, ARIZONA 85306
 LOGOS BUILDERS SOUTHWEST

job no. 24114
 drawn RBW
 approved RBW
 date 4/26/24

revisions

La.01

winton architects, inc.
 Phoenix, AZ. 85014
 1435 E. Rancho Drive
 (602) 230-9778
 wintonarch@gmail.com

T.J. McQueen & Assoc., Inc. LANDSCAPE ARCHITECTURE (TJMA) EXPRESSLY RESERVES ITS COMMON LAW, COPYRIGHT & OTHER PROPERTY RIGHTS IN THESE PLANS. THESE PLANS ARE NOT TO BE REPRODUCED, COPIED, OR OTHERWISE COPIED IN ANY MANNER OR MANIPULATED, REPRODUCED, COPIED, OR OTHERWISE COPIED IN ANY MANNER WITHOUT THE EXPRESS WRITTEN PERMISSION AND CONSENT FROM T.J. McQueen & Assoc., Inc.