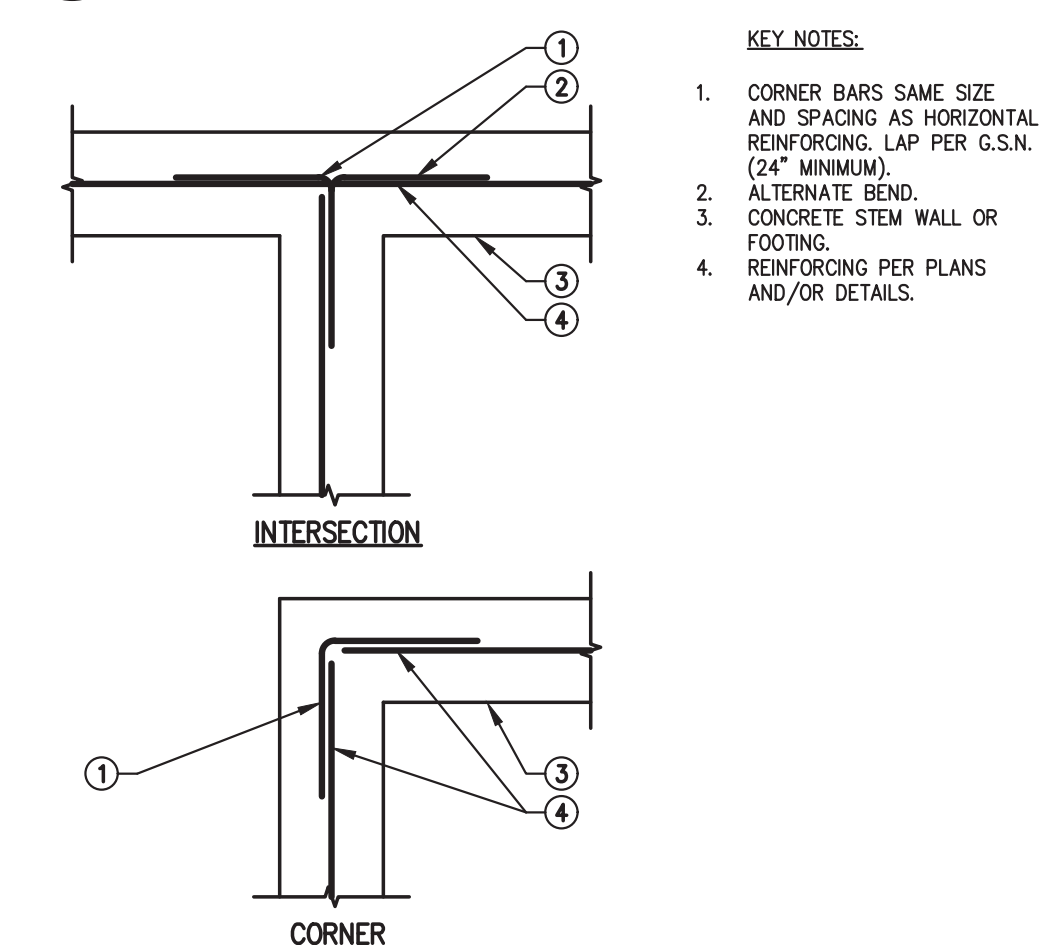
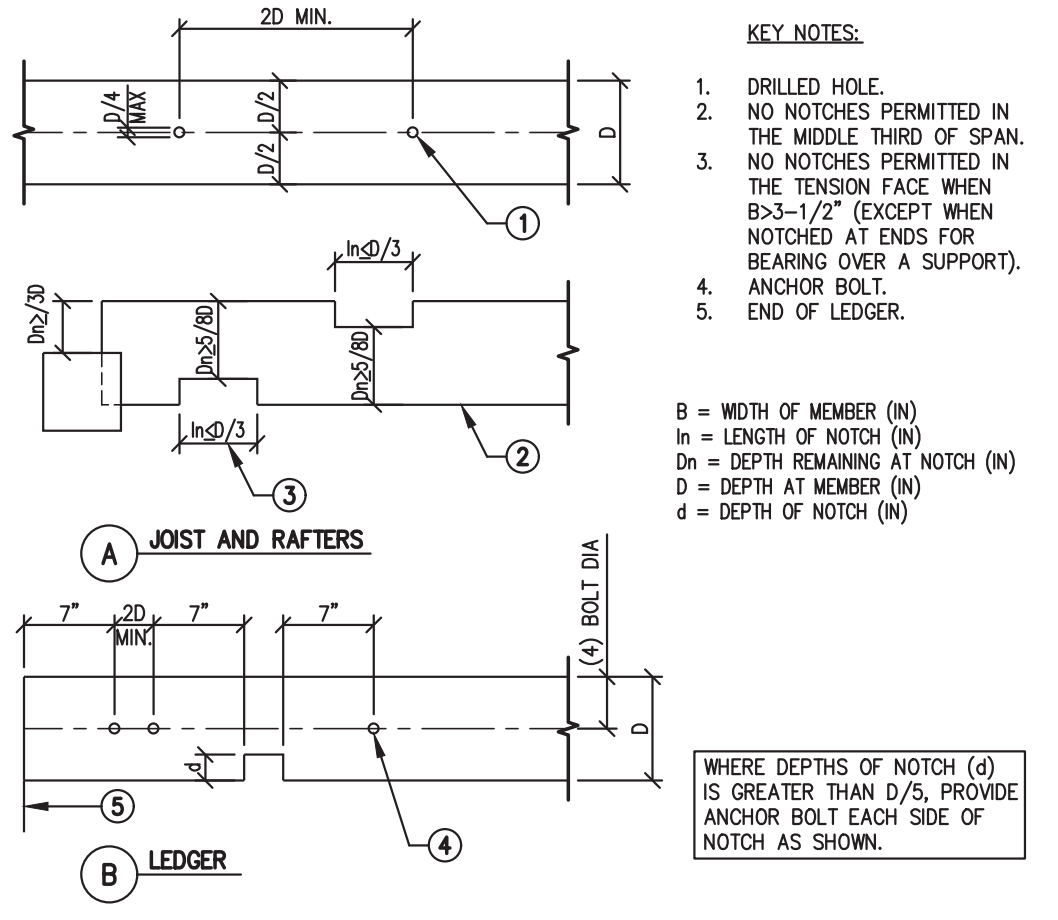


01 CONTROL JOINTS IN CONCRETE SLAB ON GRADE
100-01 NOT TO SCALE

KEY JOINTS NEED ONLY OCCUR AT EXPOSED EDGES DURING PLACEMENT UNLESS SPECIFICALLY NOTED ON THE PLANS. "TOOL WET JOINT", "ZIP STRIP", ETC. SHALL MATCH SAWCUT REQUIREMENTS.



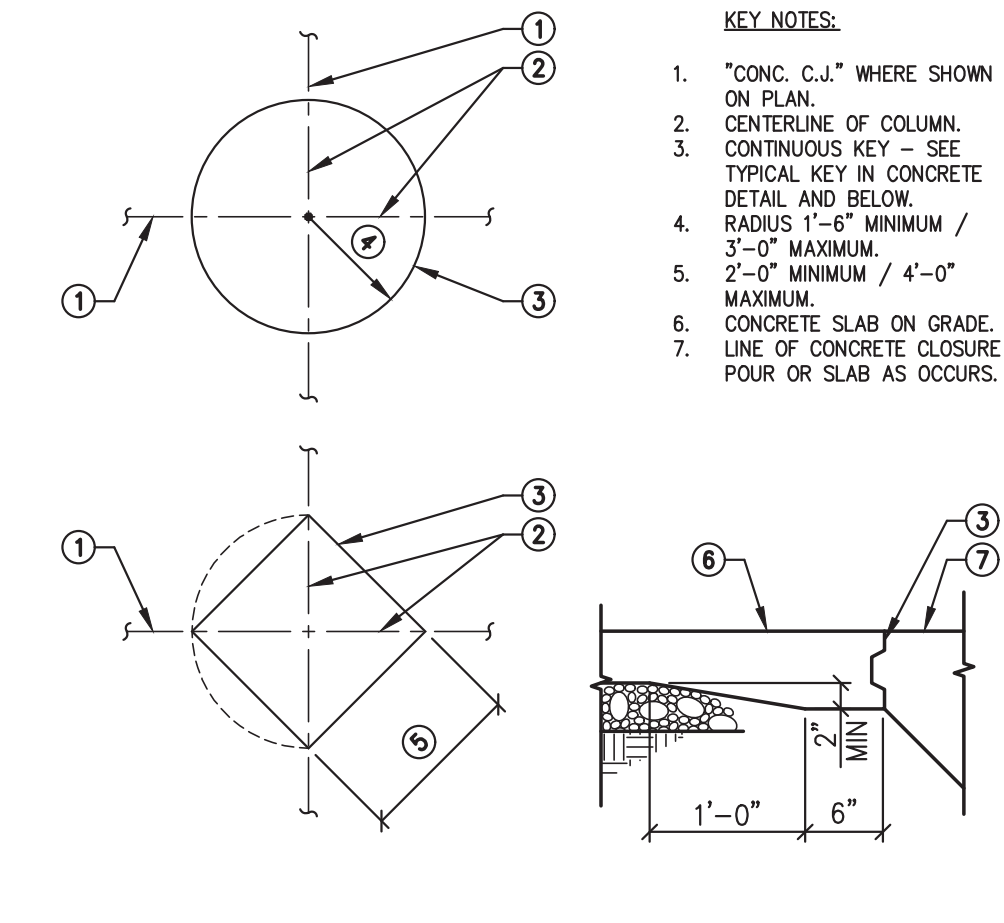
06 PLAN - CORNER REINFORCING IN CONCRETE FOOTING, STEM OR WALL
110-01 NOT TO SCALE



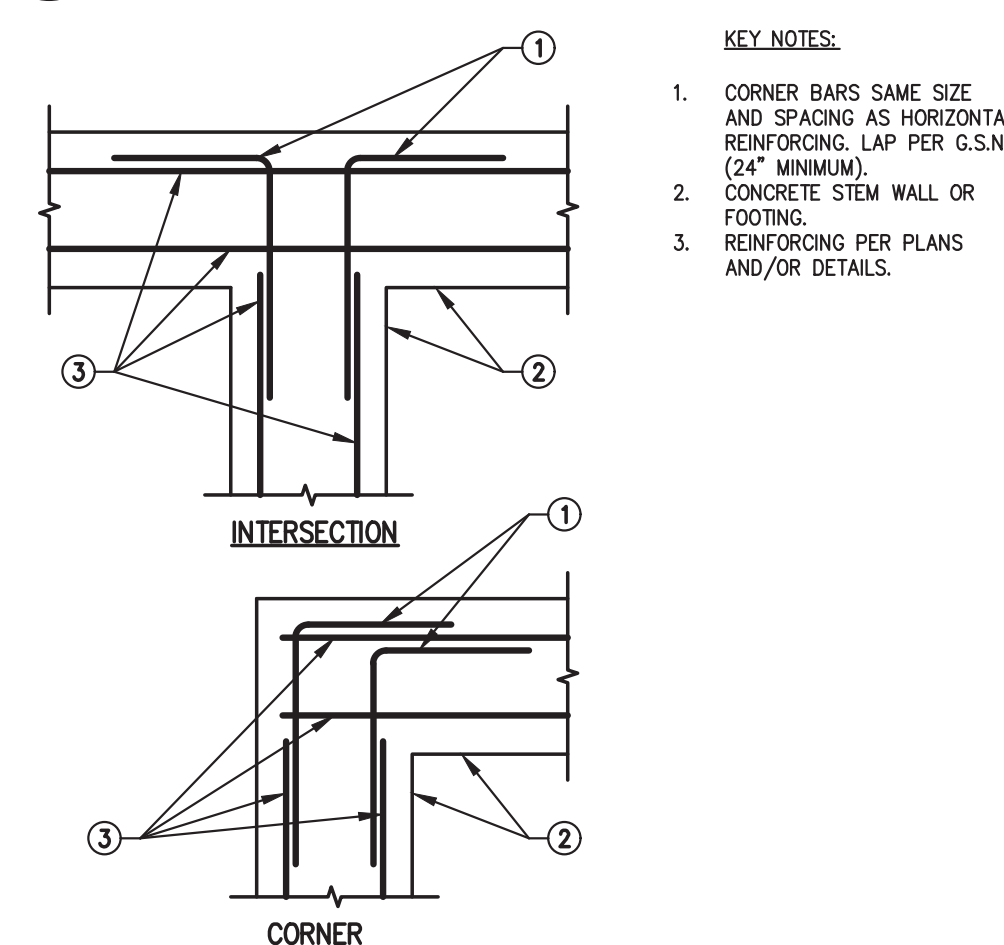
11 HOLES AND NOTCHES
120-04 NOT TO SCALE

CONNECTION	NAILING-COMMON NAILS ONLY
JOIST TO SILL OR GIRDER, TOENAIL	3-8d
BRIDGING TO JOIST, TOENAIL EACH END	2-8d
SOLE PLATE TO JOIST OR BLOCKING, TYPICAL FACE NAIL	16d AT 16" O.C.
SOLE PLATE TO JOIST OR BLOCKING, AT BRACED WALL PANELS	3-16d PER 16" O.C.
TOP PLATE TO STUD, END NAIL	2-16d
STUD TO SOLE PLATE	4-8d, TOENAIL OR 2-16d, END NAIL
DOUBLE STUDS, FACE NAIL	16d AT 24" O.C.
DOUBLE TOP PLATES, TYPICAL FACE NAIL	16d AT 16" O.C.
BLOCKING BETWEEN JOIST OR RAFTERS TO TOP PLATE, TOENAIL	3-8d
RM JOIST TO TOP PLATE, TOENAIL	8d AT 6" O.C.
CONTINUOUS HEADER, TWO PIECES	16d AT 16" O.C. ALONG EACH EDGE
CEILING JOIST TO PLATE, TOENAIL	3-8d
CONTINUOUS HEADER TO STUD, TOENAIL	4-8d
CEILING JOISTS, LAPS OVER PARTITIONS, FACE NAILS	3-16d
CEILING JOISTS TO PARALLEL RAFTERS, FACE NAIL	3-16d
RAFTER TO PLATE, TOENAIL	3-8d
BUILT-UP CORNER STUDS	16d AT 24" O.C.

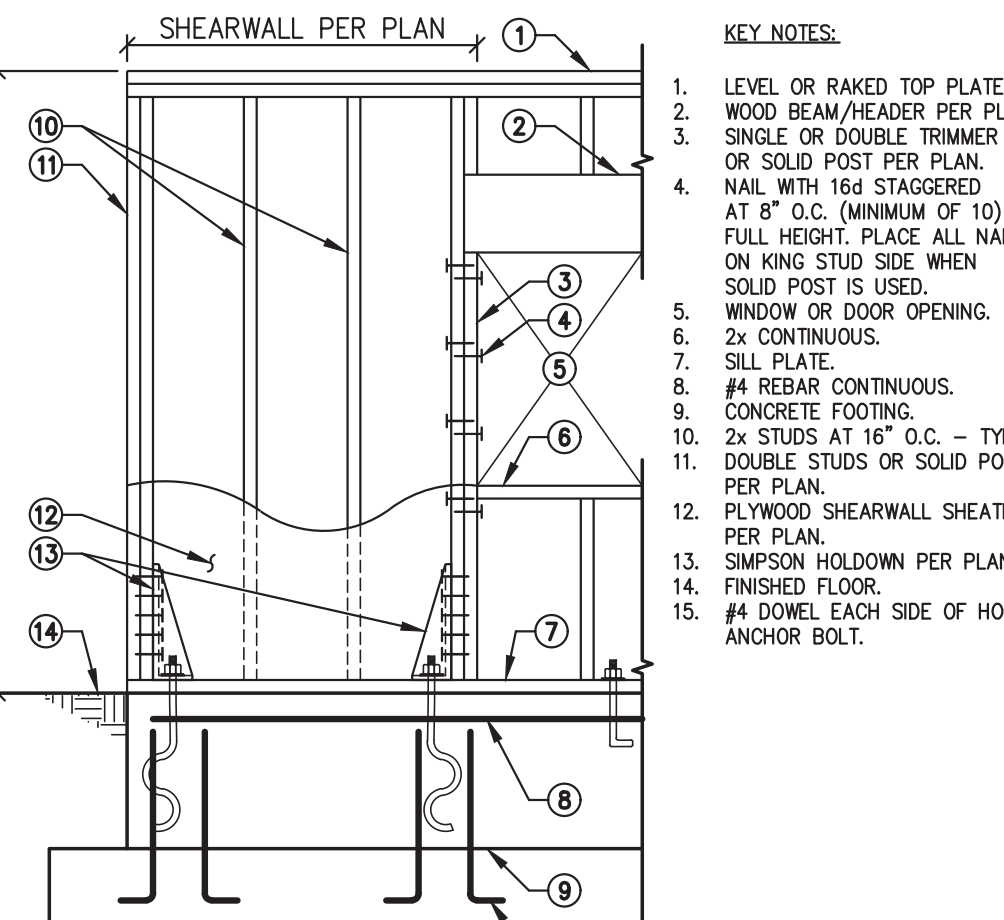
16 TYPICAL NAILING SCHEDULE - U.N.O. INTERNATIONAL BUILDING CODE
400-01.1 NOT TO SCALE



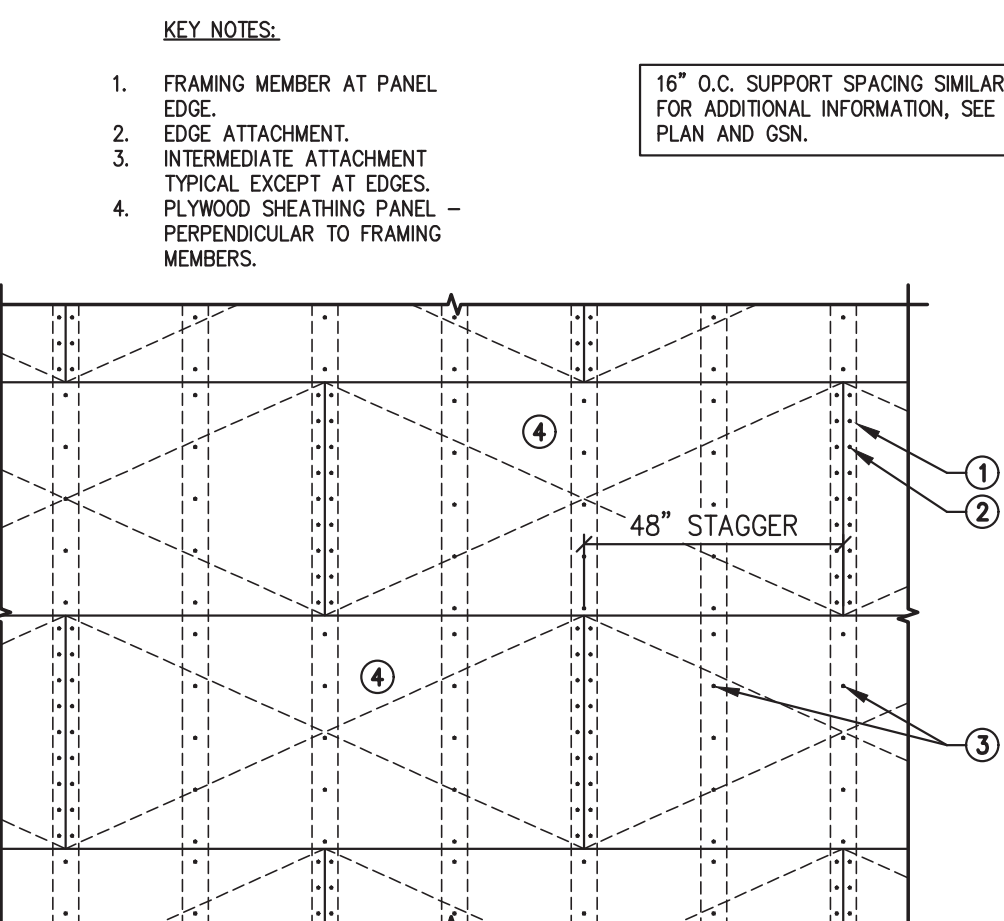
02 TYPICAL COLUMN CLOSURE POUR AT CONCRETE SLAB ON GRADE
100-04 NOT TO SCALE



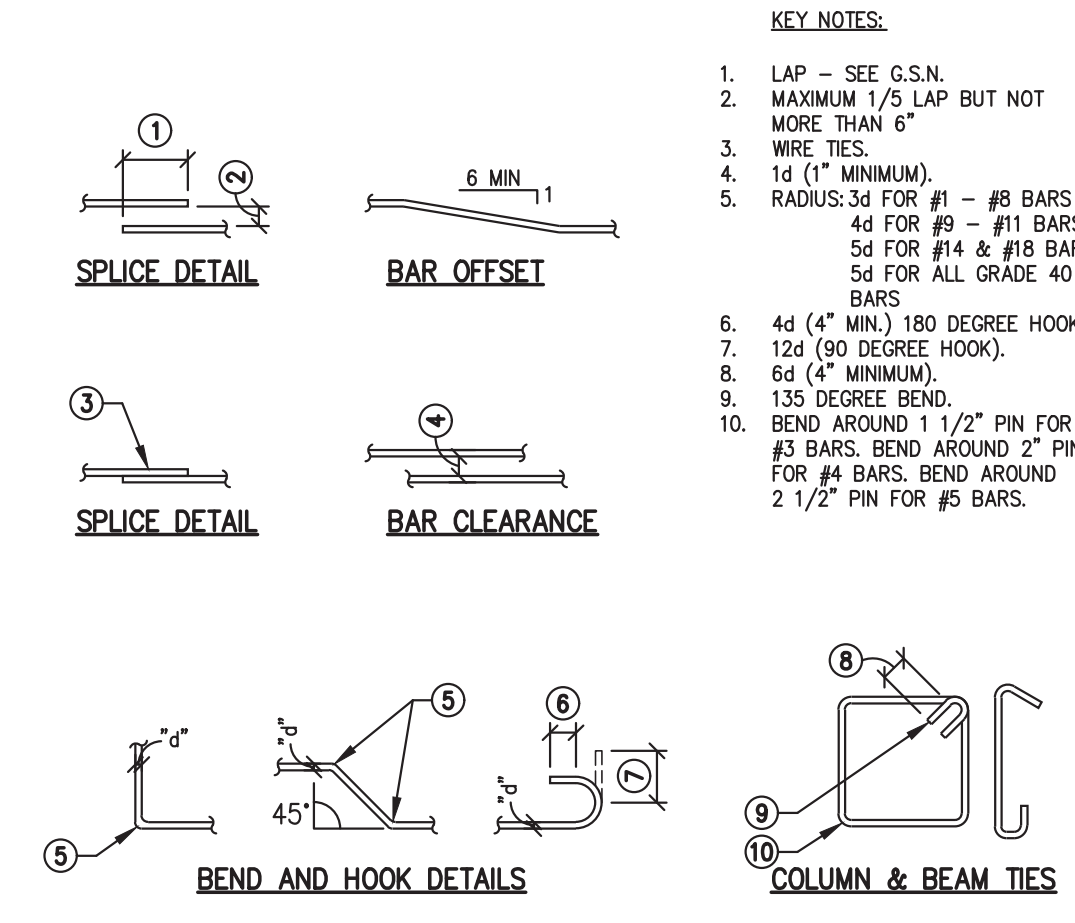
07 PLAN - CORNER REINFORCING IN CONCRETE FOOTING, STEM OR WALL
110-01.1 NOT TO SCALE



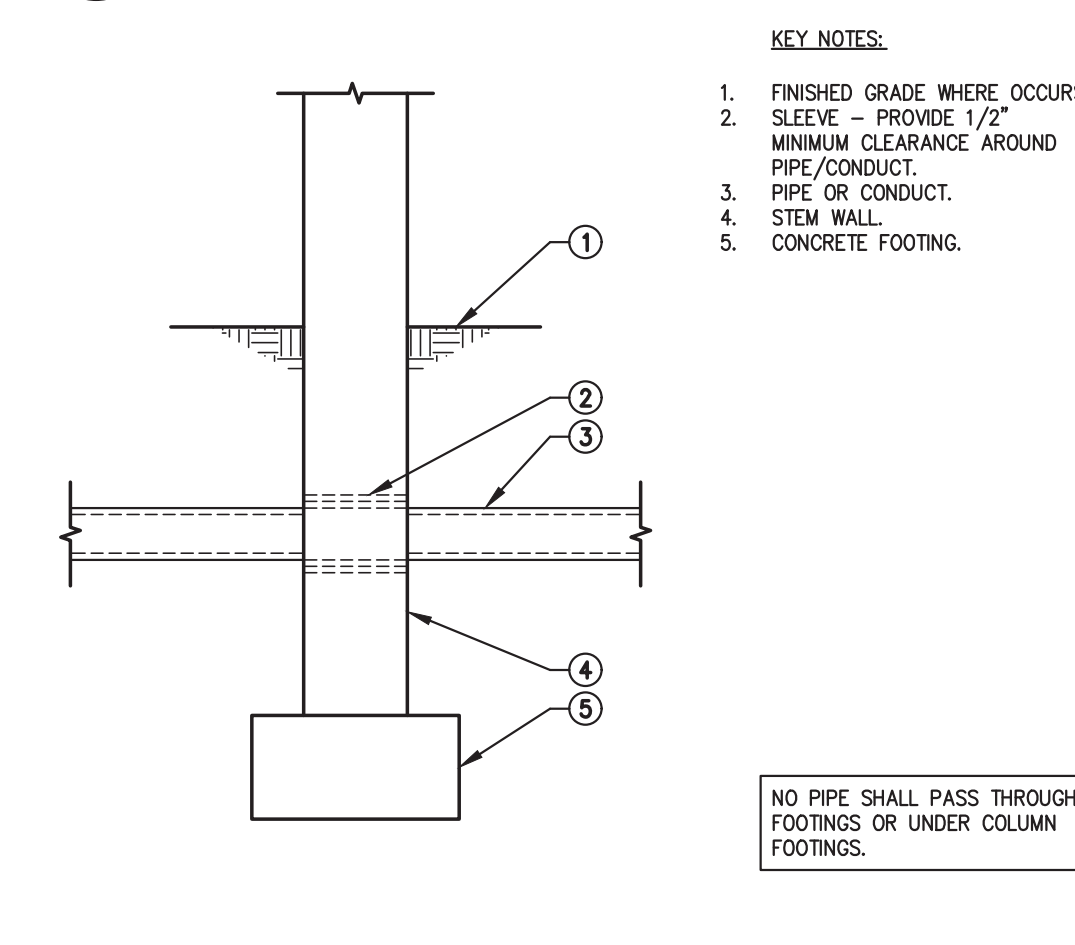
12 TYPICAL SHEAR WALL
121-02.2M NOT TO SCALE



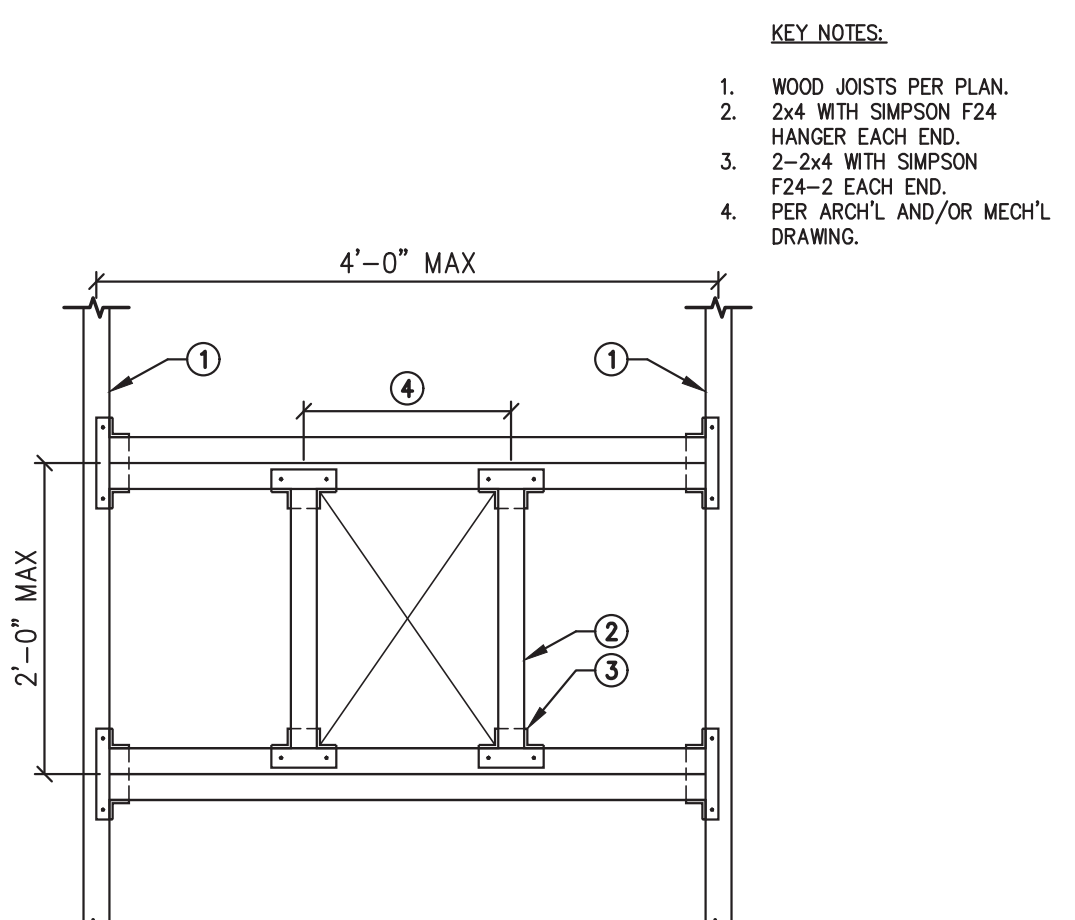
17 TYPICAL PLYWOOD SHEATHING LAYOUT - 24" O.C. SUPPORTS
400-01.2 NOT TO SCALE



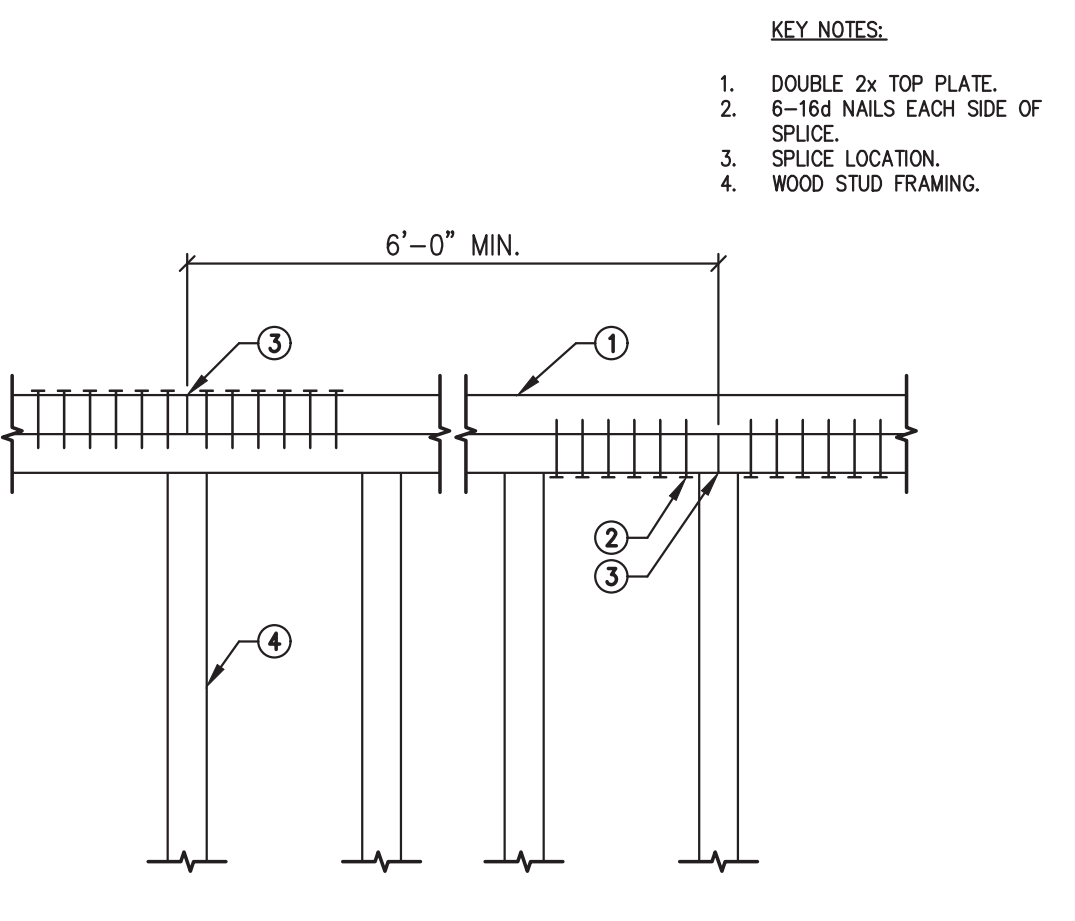
03 TYPICAL CONCRETE REINFORCING BAR DETAILS
102-02 NOT TO SCALE



08 PIPE THROUGH FOUNDATION STEM WALL
110-03 NOT TO SCALE

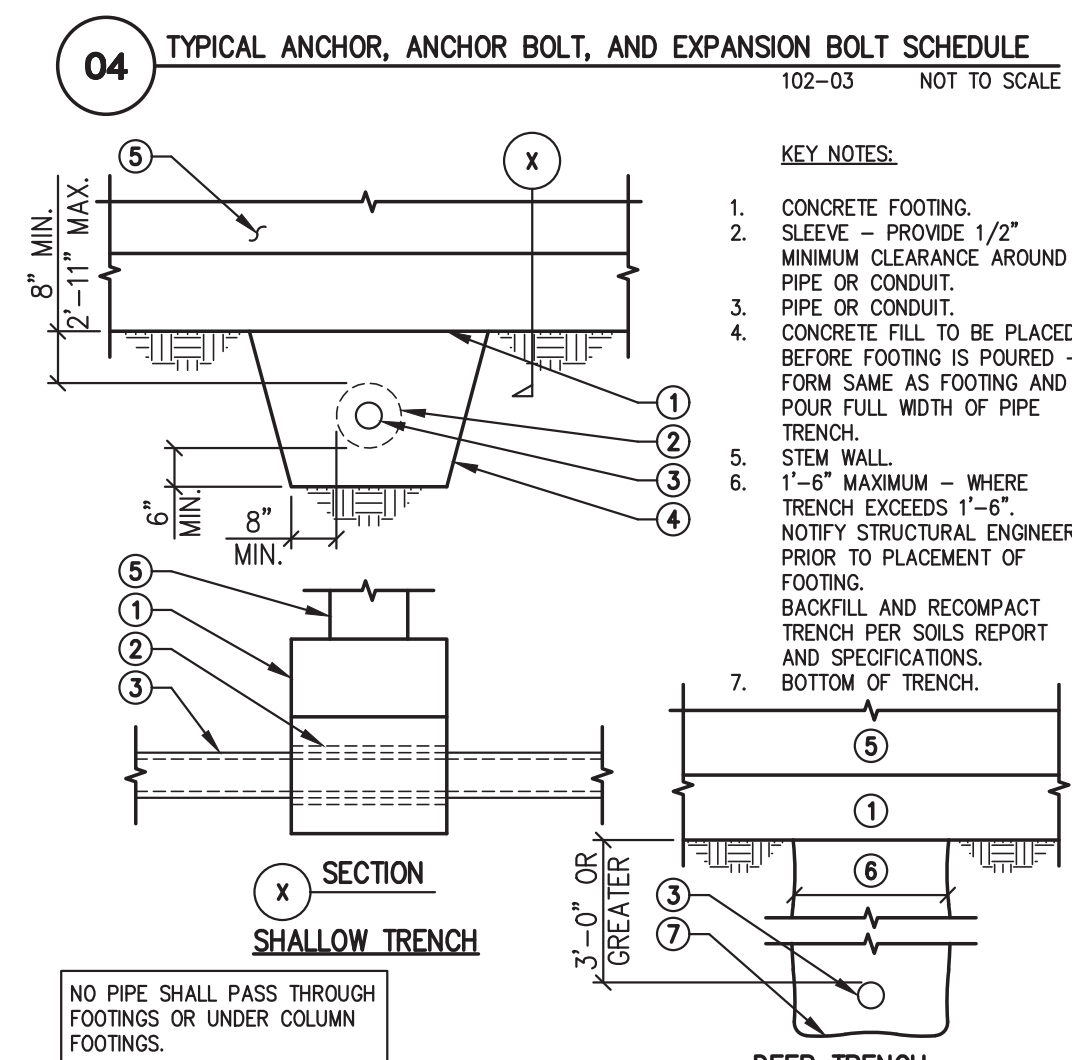


13 PLAN VIEW - TYPICAL FRAMING AROUND SMALL OPENING
20-119 NOT TO SCALE

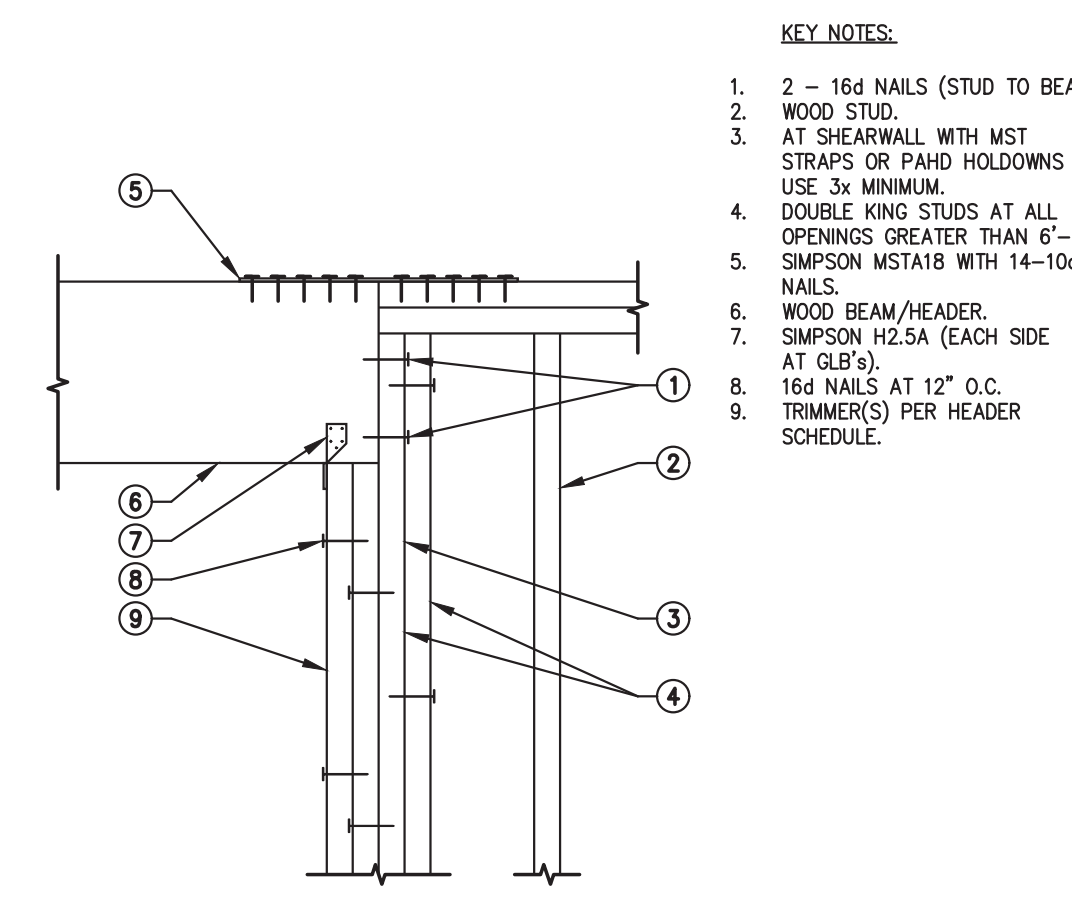


18 TOP PLATE SPLICE
400-05 NOT TO SCALE

BOLT DIAMETER	VERT BOLT EMBEDMENT LENGTH	HORIZ BOLT EMBEDMENT LENGTH	HEADED STUD FILLET WELD SIZE "W"
1/2"	7"	4"	1/4"
5/8"	7"	4"	5/16"
3/4"	7"	5"	5/16"
7/8"	8"	6"	5/16"
1"	9"	7"	3/8"

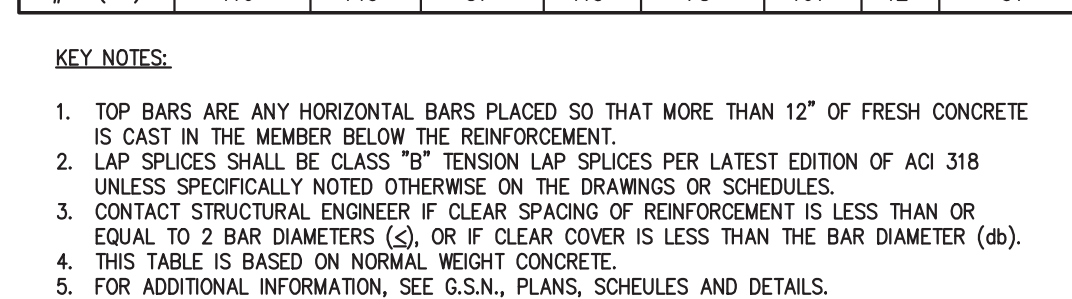


04 TYPICAL ANCHOR, ANCHOR BOLT, AND EXPANSION BOLT SCHEDULE
102-03 NOT TO SCALE

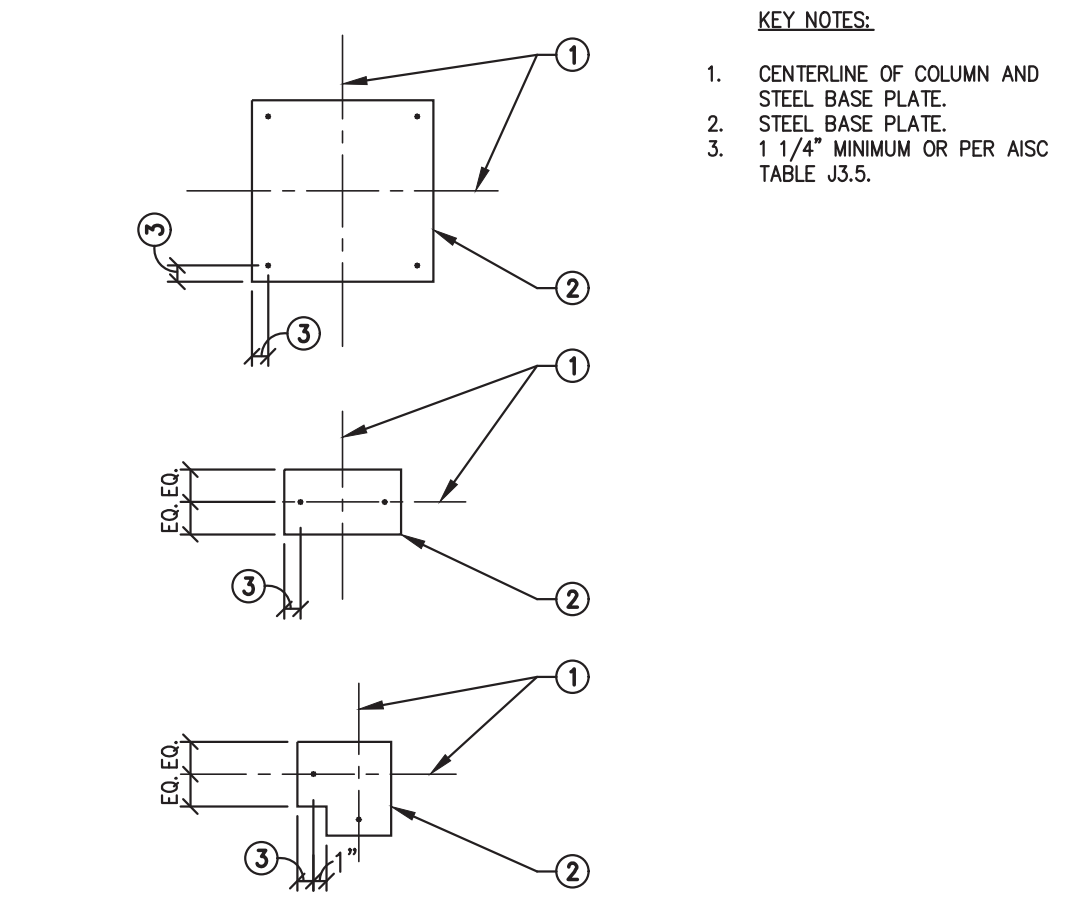


09 PIPE PASSING UNDER WALL FOOTING
110-04 NOT TO SCALE

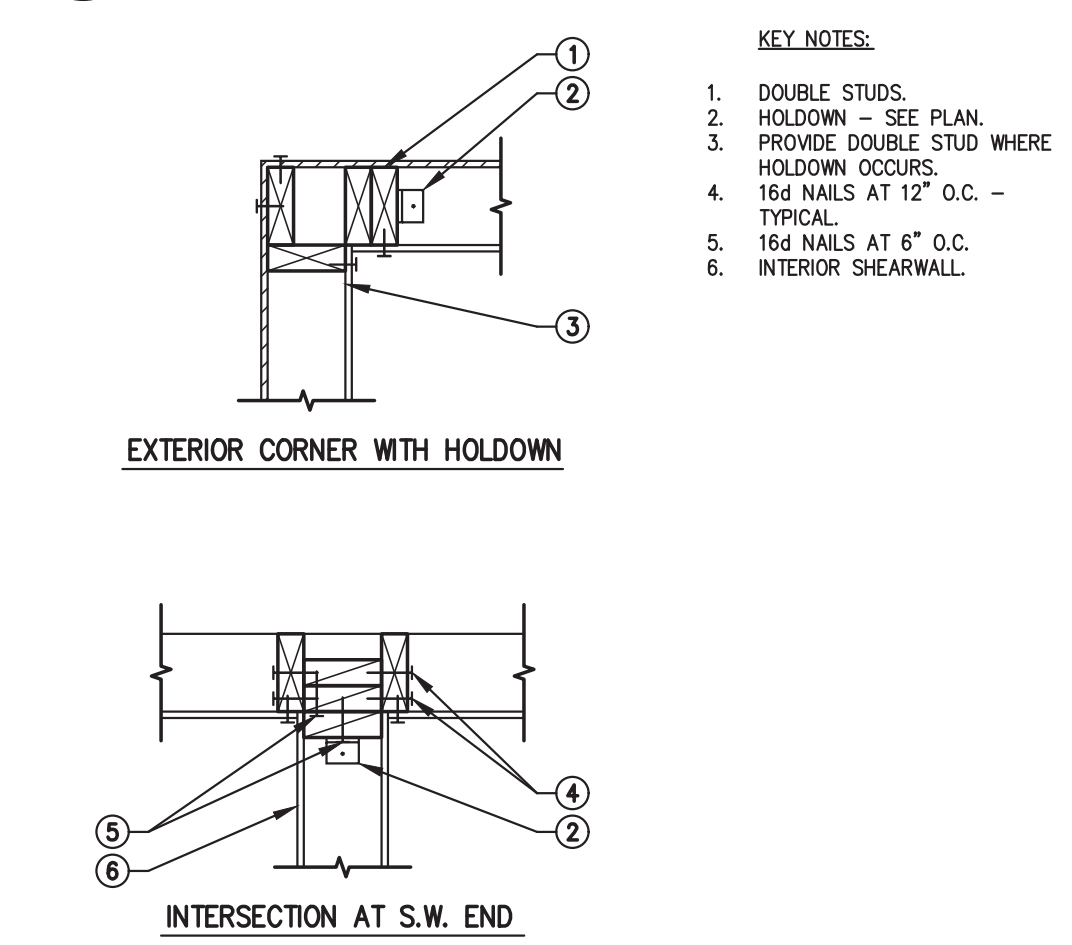
CONC. PSI	CLASS B TENSION SPLICE LENGTHS (INCHES)						COMP. BARS
	f'c = ≥ 2,500/3,000		f'c = ≥ 4,000		f'c = ≥ 5,000		
BAR LOCATION	REGULAR	TOP	REGULAR	TOP	REGULAR	TOP	STD LAP ENCLOSED WITH SPIRAL TIES
#3 (10)	24"	31"	19"	24"	17"	22"	12"
#4 (13)	32"	41"	25"	32"	22"	29"	15"
#5 (16)	39"	51"	31"	40"	28"	36"	14"
#6 (19)	47"	61"	37"	48"	33"	43"	17"
#7 (22)	69"	89"	54"	70"	49"	63"	20"
#8 (25)	78"	102"	62"	80"	55"	72"	23"
#9 (29)	88"	115"	70"	91"	63"	81"	34"
#10 (32)	99"	129"	79"	102"	70"	91"	38"
#11 (36)	110"	143"	87"	113"	78"	101"	31"



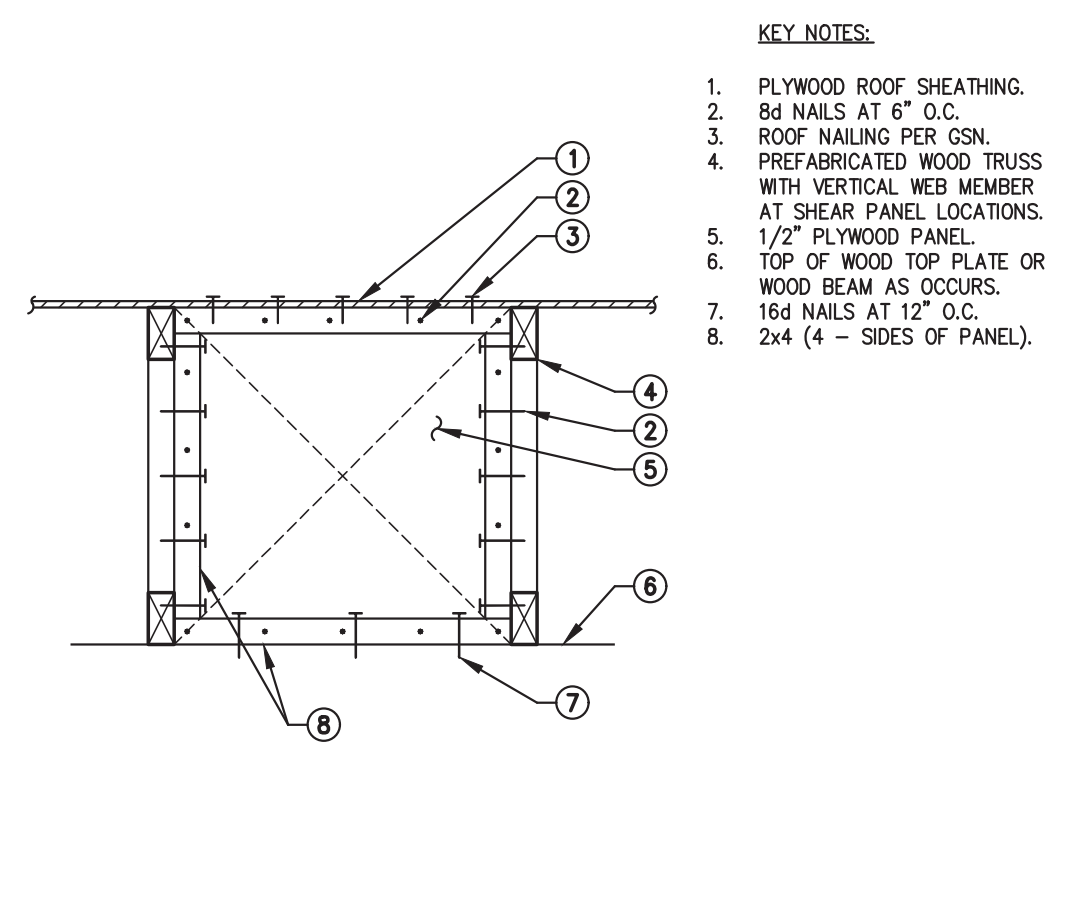
19 LAP SCHEDULE FOR REINFORCING STEEL
102-01 NOT TO SCALE



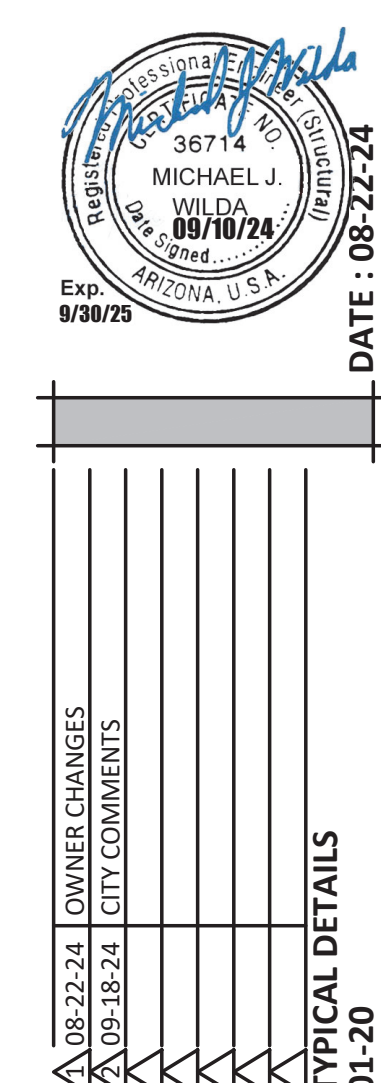
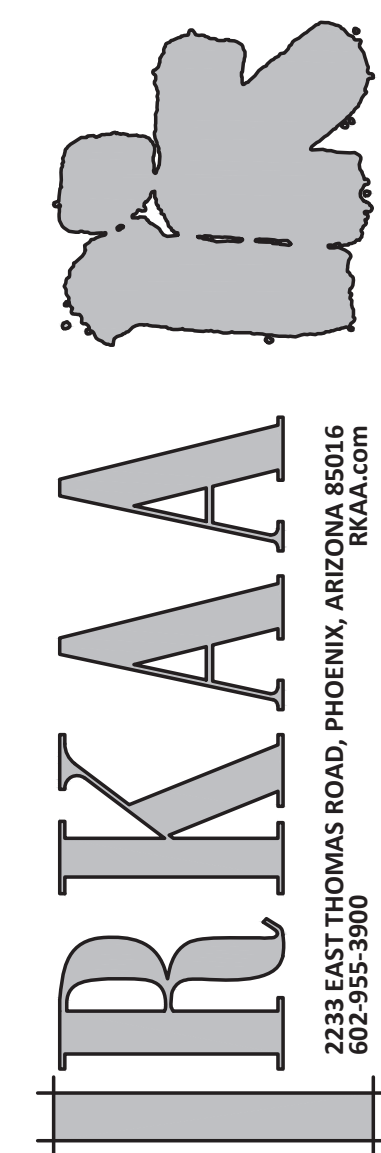
05 PLAN - TYPICAL BOLT PATTERN FOR STEEL COLUMN BASE PLATE
102-04 NOT TO SCALE



10 PLAN - TYPICAL WALL DETAILS
120-02 NOT TO SCALE



15 TYPICAL - PLYWOOD SHEAR PANEL AT WOOD TRUSS
400-04M NOT TO SCALE



NEW COMMERCIAL PAD
PAD 58 AT PASO LINDO SHOPPING CENTER
NEC OF ARIZONA AVE AND OCCOTILLO RD.
CHANDLER, AZ

CONSTRUCTION SET_11-12-24

OWNER CHANGES
08/22/24
CITY COMMENTS
09/18/24

NOTES OF ALTERNATE BILLING OR PAYMENT CYCLES:
THIS CONTRACT MAY ALLOW THE OWNER TO REQUIRE THE BILLING CYCLES OTHER THAN THIRTY DAYS. THE CONTRACTOR MAY ALLOW POWER TO MAKE PAYMENT CERTIFICATION AND APPEAL OF BILLING AND ESTIMATES A WRITTEN DOCUMENT OF SUCH BILLING CYCLE APPLICABLE TO THE PROJECT IT IS AVAILABLE FROM OWNER OR DESIGNER.

Copyright 2023, All Rights Reserved. THE DRAWING IS AN INSTRUMENT OF SERVICE. THE PROJECT IS THE PROPERTY OF BRKAA ARCHITECTS, INC. AND SHALL NOT BE REPRODUCED, OR TRANSMITTED IN ANY FORM OR BY ANY MEANS, WITHOUT THE WRITTEN PERMISSION OF THE CORPORATION.

design by: **LS**
drawn by: **GV**
checked by: **GS**

S1.2
project #: 23057

Simply Structural Inc. #24-121-ENG:GS
602-443-0303
730 N. 52nd Street, Suite 105
Phoenix, Arizona 85008
mwilda@simplystructural.com