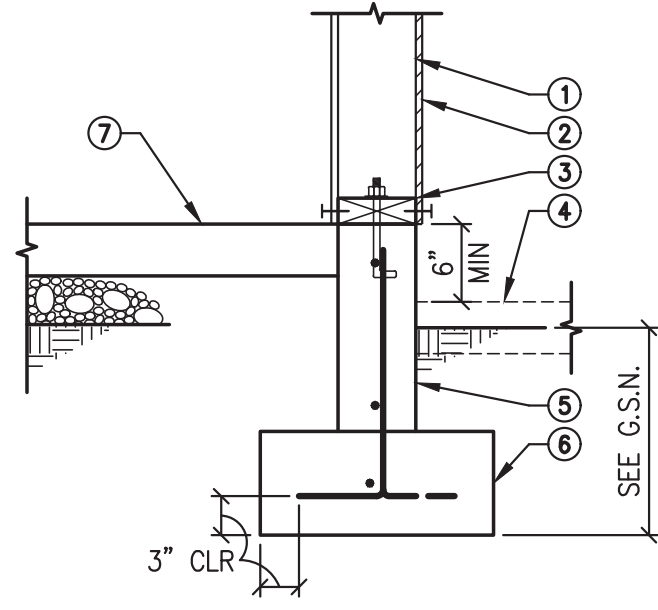


KEY NOTES:

- WOOD STUD WALL.
- SHEARWALL SHEATHING PER SCHEDULE OR SHEATHING PER ARCHITECT WHERE UNSPECIFIED.
- 2x SILL PLATE WITH 1/2" DIA. ANCHOR BOLTS AT 48" O.C. U.N.O.
- FINISHED GRADE OR CONCRETE SLAB AS OCCURS.
- CONCRETE STEM WITH 1 #4 TOP AND BOTTOM AND #4 DOWELS AT 48" O.C. (ALTERNATE BENDS).
- CONCRETE FOOTING.
- CONCRETE SLAB ON GRADE.

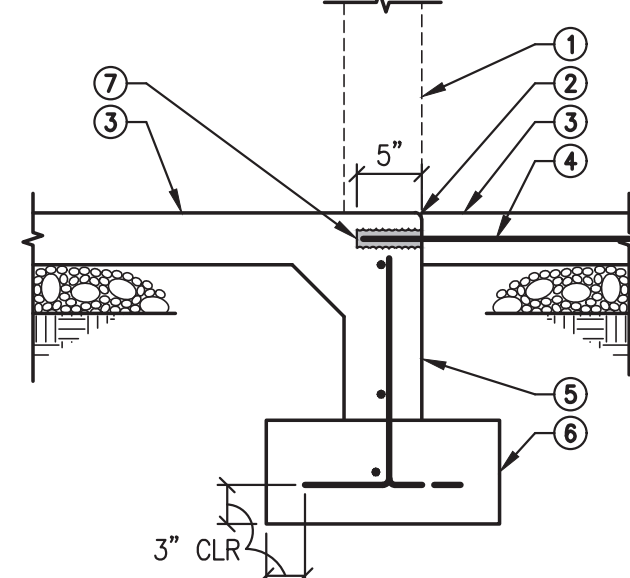


101 WOOD STUD WALL AT CONCRETE FOOTING

122-01 NOT TO SCALE

KEY NOTES:

- WOOD STUD WALL BEYOND.
- TOOLED EDGE.
- CONCRETE SLAB ON GRADE.
- #5 DOWELS x30" LONG AT 12" O.C. (MINIMUM 2 PER OPENING).
- CONCRETE STEM WITH REINFORCING CONTINUOUS FROM BEYOND.
- CONCRETE FOOTING.
- DRILL AND EPOXY DOWEL. USE SIMPSON SET EPOXY PER I.C.B.O. ER. 5279.

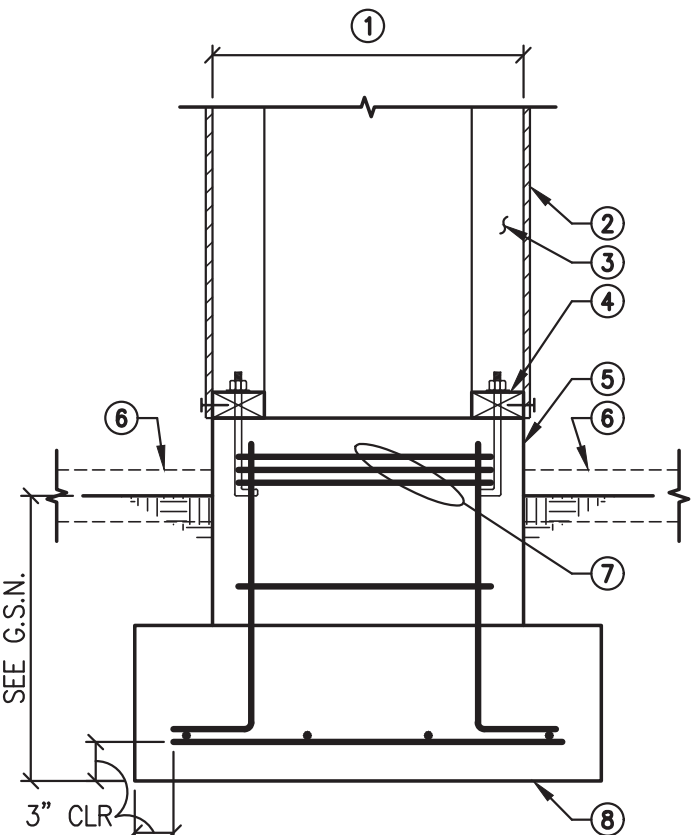


102 OPENING IN WOOD STUD WALL AT CONCRETE FOOTING

123-01 NOT TO SCALE

KEY NOTES:

- SEE ARCHITECTURAL DRAWINGS.
- 3/8" PLYWOOD SHEATHING WITH 8d NAILS AT 6" O.C. EDGES AND 12" O.C. FIELD.
- WOOD STUD WALL.
- CONTINUOUS 2x PLATE WITH 1/2" DIA. ANCHOR BOLTS AT 48" O.C. MAXIMUM - MINIMUM 2 ANCHOR BOLTS PER PLATE.
- CONCRETE PEDESTAL WITH 4 #5 DOWELS SPACED EVENLY AROUND PERIMETER AND #3 TIES AT 8" O.C.
- FINISHED GRADE OR CONCRETE SLAB AS OCCURS.
- 3 #3 TIES IN TOP 5" OF PEDESTAL.
- CONCRETE FOOTING.

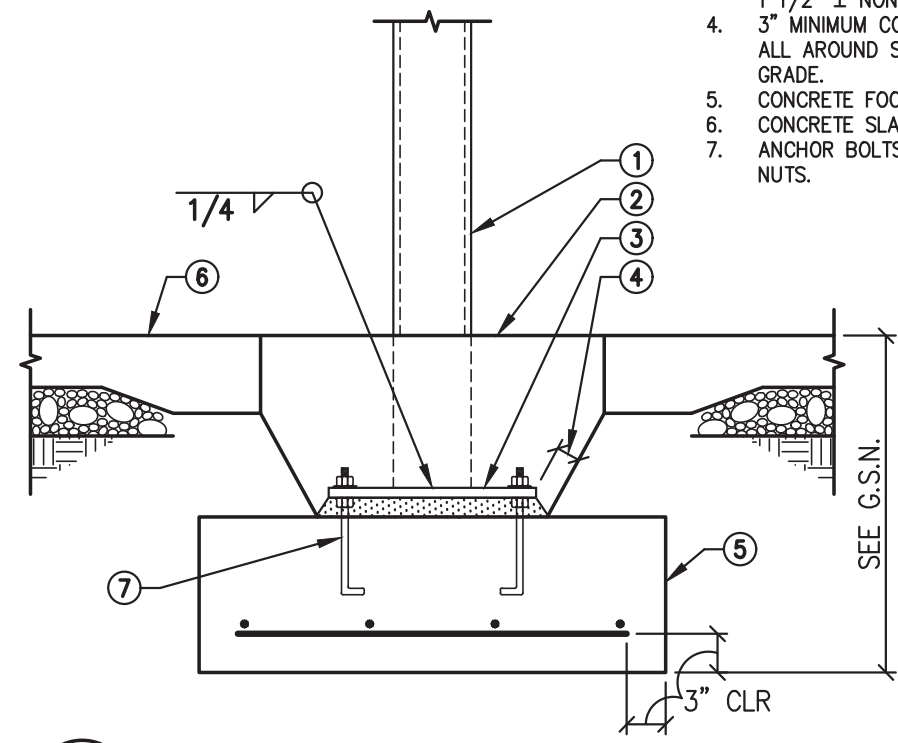


103 WOOD STUD FRAME COLUMN AT CONCRETE FOOTING

128-02 NOT TO SCALE

KEY NOTES:

- STEEL COLUMN.
- CONCRETE CLOSURE POUR AROUND COLUMN PER TYPICAL DETAIL.
- STEEL BASE PLATE OVER 1 1/2" ± NON-SHRINK GROUT.
- 3" MINIMUM CONCRETE COVER ALL AROUND STEEL BELOW GRADE.
- CONCRETE FOOTING.
- CONCRETE SLAB ON GRADE.
- ANCHOR BOLTS WITH DOUBLE NUTS.

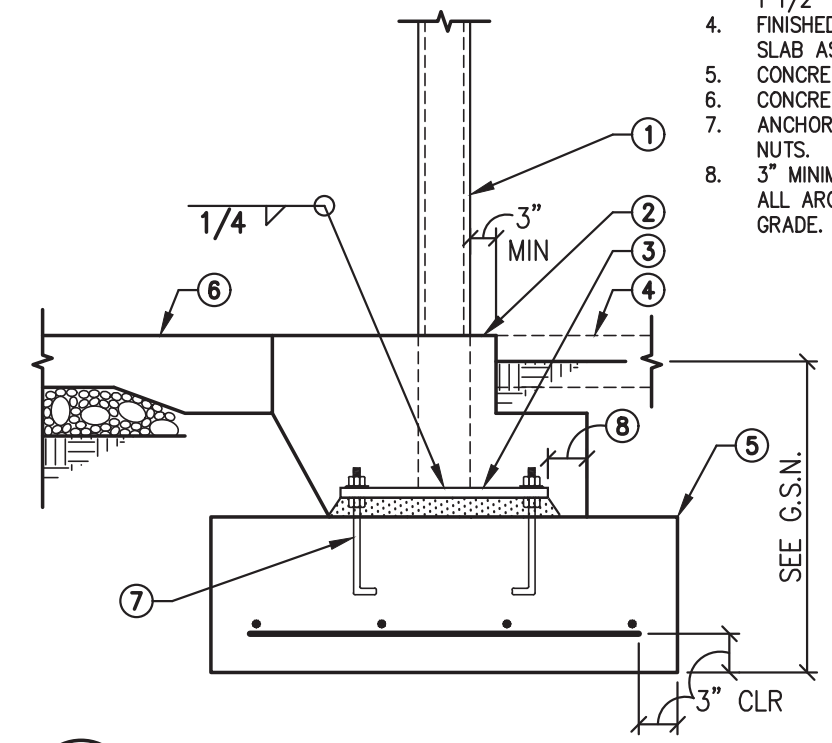


104 STEEL COLUMN FOOTING

140-01 NOT TO SCALE

KEY NOTES:

- STEEL COLUMN.
- CONCRETE CLOSURE POUR AROUND COLUMN PER TYPICAL DETAIL.
- STEEL BASE PLATE OVER 1 1/2" ± NON-SHRINK GROUT.
- 3" MINIMUM CONCRETE COVER ALL AROUND STEEL BELOW GRADE.
- CONCRETE FOOTING.
- ANCHOR BOLTS WITH DOUBLE NUTS.
- MINIMUM CONCRETE COVER ALL AROUND STEEL BELOW GRADE.

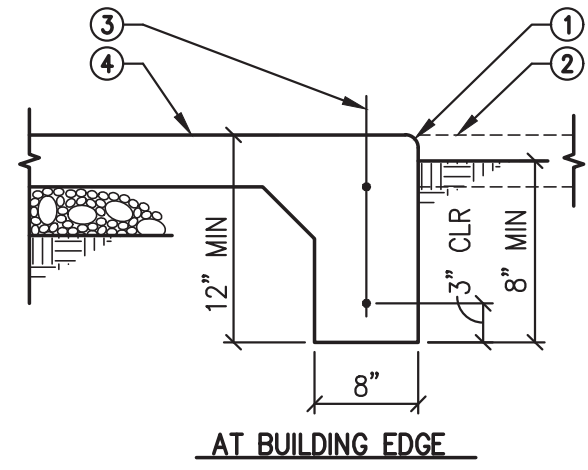


105 STEEL COLUMN FOOTING

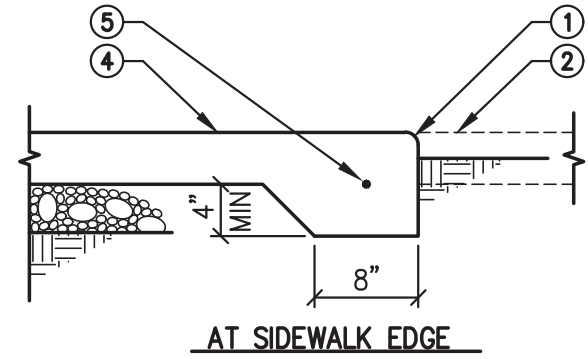
140-02 NOT TO SCALE

KEY NOTES:

- TOOLED EDGE.
- FINISHED GRADE OR CONCRETE SLAB ON GRADE.
- 2 #4 CONTINUOUS.
- CONCRETE SLAB ON GRADE.
- 1 #4 CONTINUOUS.



AT BUILDING EDGE



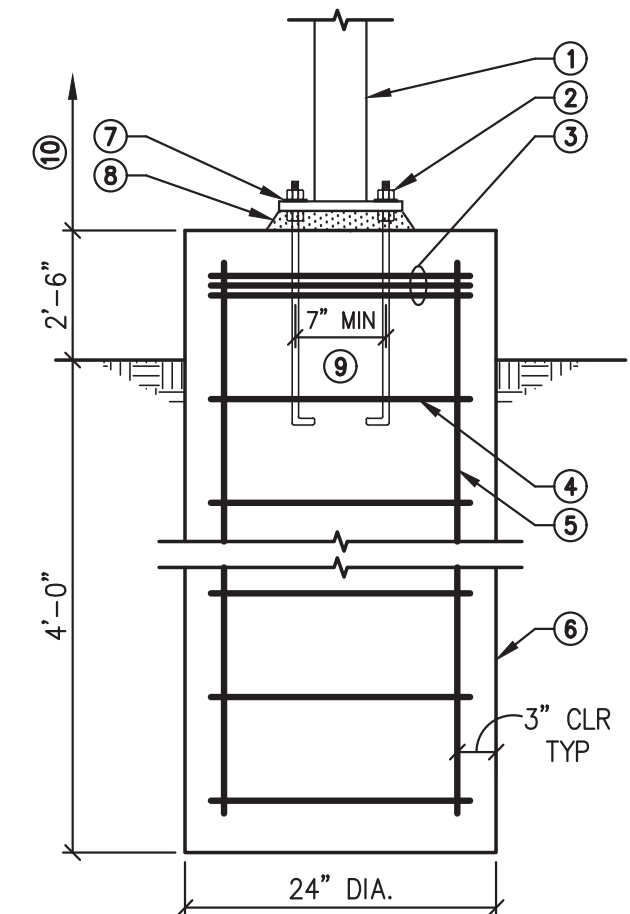
AT SIDEWALK EDGE

106 TYPICAL CONCRETE TURNDOWN

101-01 NOT TO SCALE

KEY NOTES:

- LIGHTPOLE BY OTHERS.
- ANCHOR BOLTS AND BASEPLATE BY LIGHTPOLE MANUFACTURER.
- 3 - #3 IN TOP 5".
- #3 TIES AT 12" O.C.
- 6 - #6 VERTS Fy = 60 KSL.
- CONCRETE PIER F'c = 3000 PSI.
- LEVELING NUTS.
- 1" ± DROPPACK.
- VERIFY EXACT DIMENSION WITH LIGHTPOLE MANUFACTURER.
- MAX HEIGHT = 12'-6".

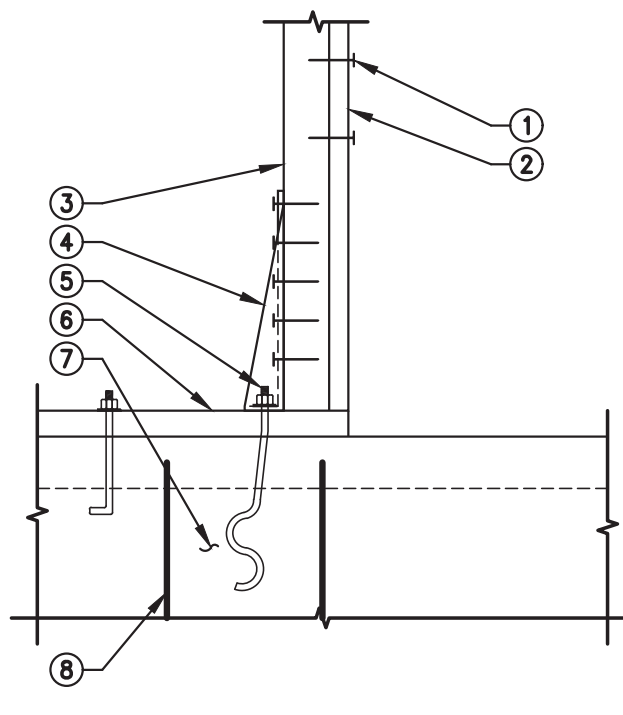


107 LIGHTPOLE BASE

185-02M NOT TO SCALE

KEY NOTES:

- NAIL STUDS TOGETHER WITH 16d NAILS AT 8" O.C.
- 2x TRIMMER.
- 4x6 POST (FULL HEIGHT) EACH END OF SHEARWALL.
- SIMPSON HHQ-11 HOLDOWN. FILL ALL HOLES WITH SIMPSON SDS 1/4x3" WOOD SCREWS.
- SIMPSON SSTE28 ANCHOR BOLT.
- 2x PRESSURE TREATED BOTTOM PLATE.
- CONCRETE FOOTING.
- (1) #5 DOWEL TO FOOTING WITHIN 6" HOLDOWN ANCHOR (EACH SIDE).

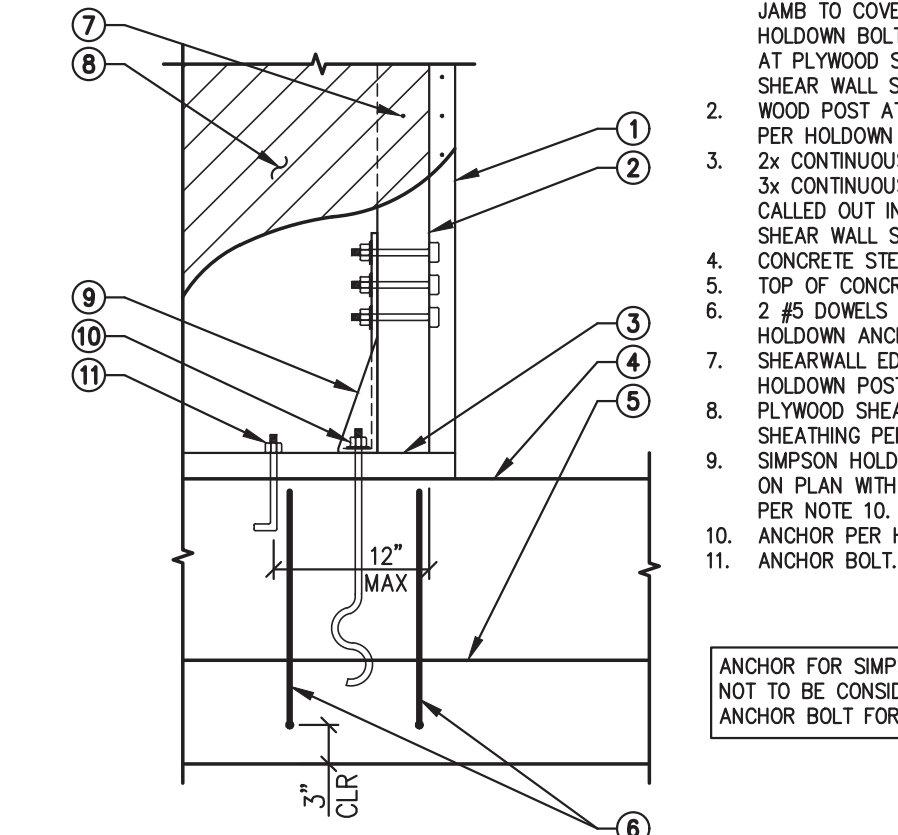


108 HHQ TYPE HOLDOWN - EXTERIOR WALL

121-08.2 NOT TO SCALE

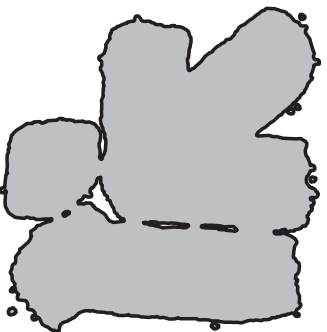
KEY NOTES:

- PROVIDE ADDITIONAL STUD AT JAMB TO COVER HEADS OF HOLDOWN BOLTS. FIELD NAILS AT PLYWOOD SHEATHING PER SHEAR WALL SCHEDULE.
- WOOD POST AT "HD" HOLDOWN PER HOLDOWN SCHEDULE.
- 2x CONTINUOUS PLATE.
- 3x CONTINUOUS PLATE WHERE CALLED OUT IN DETAILS AND SHEAR WALL SCHEDULE.
- CONCRETE STEM WALL.
- TOP OF CONCRETE FOOTING.
- (1) #5 DOWELS WITHIN 6" OF HOLDOWN ANCHOR EACH SIDE.
- SHEARWALL EDGE NAILING AT HOLDOWN POST.
- PLYWOOD SHEAR WALL SHEATHING PER PLAN.
- SIMPSON HOLDOWN AS INDICATED ON PLAN WITH ANCHOR PER PER NOTE 10.
- ANCHOR PER HOLDOWN SCHEDULE.
- ANCHOR BOLT.



109 SIMPSON "HD" HOLDOWN - CORNER CONDITION

121-08.1 NOT TO SCALE



BRKAA
2238 EAST THOMAS ROAD, PHOENIX, ARIZONA 85016
602-955-3900
RKA.COM



DATE: 08-27-24

NO.	DATE	DESCRIPTION
08-22-24	OWNER CHANGES	
05-18-24	CITY COMMENTS	

FOUNDATION DETAILS
101.120

NOTES OF ALTERNATE BILLING OR PAYMENT CYCLE: THIS CONTRACT MAY ALLOW THE OWNER TO REQUIRE THE SUBMISSION OF BILLING OR PAYMENT CYCLE IN BILLING CYCLES OTHER THAN THIRTY DAYS. THE CONTRACTOR MAY ALLOW OWNER TO MAKE A WRITTEN CERTIFICATION AND APPEAL OF BILLING AND ESTIMATES A WRITTEN CERTIFICATION OF OTHER BILLING CYCLE APPLICABLE TO THE PROJECT IS AVAILABLE FROM OWNER OR DESIGNER/AGENT.

NEW COMMERCIAL PAD
PAD 5B AT PASEO LINDO SHOPPING CENTER
NEC OF ARIZONA AVE AND OCOTILLO RD.
CHANDLER, AZ
CONSTRUCTION SET_11-12-24

design by: GS
drawn by: LV
checked by: GS

S4.1
project #: 23057

Simply Structural Inc. #24-121 ENG:GS
602-443-0303
730 N. 52nd Street, Suite 105
Phoenix, Arizona 85008
mwilda@simplystructural.com