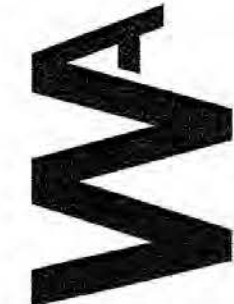




winton architects, inc.
 Phoenix, AZ. 85014
 1435 E. Rancho Drive
 (602) 230-9778
 wintonarch@gmail.com

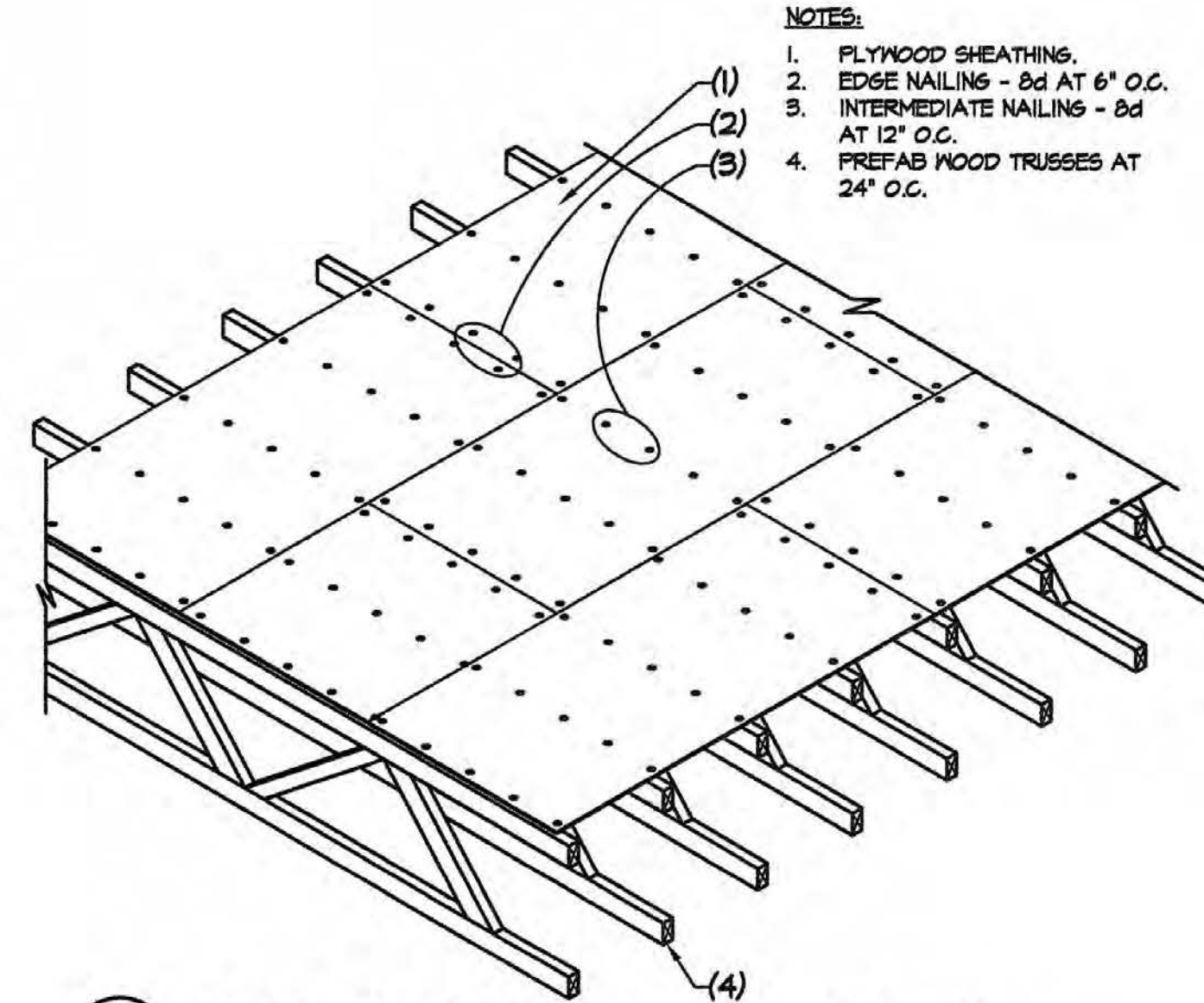


A NEW BUILDING FOR: KIWAMI ON BELL
5327 W. BELL ROAD
GLENDALE, ARIZONA 85306
LOGOS BUILDERS SOUTHWEST

job no. 24-268
 drawn DTR
 approved FJN
 date 12/02/24

revisions

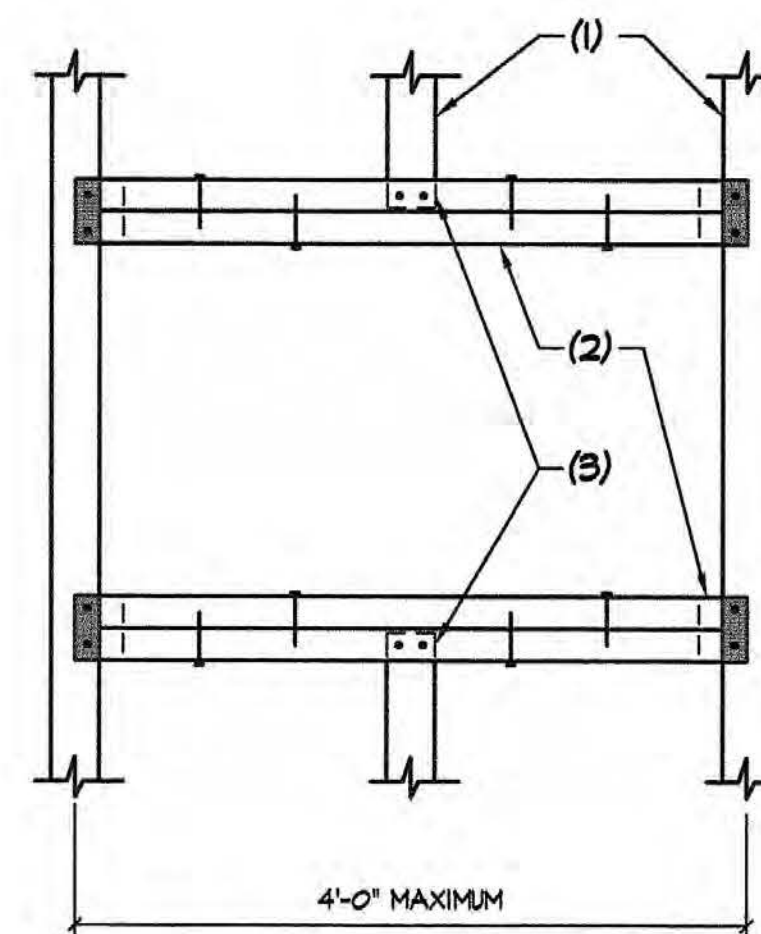
S5.1



201 TYPICAL ROOF PLYWOOD AT PREFAB WOOD TRUSSES NO SCALE

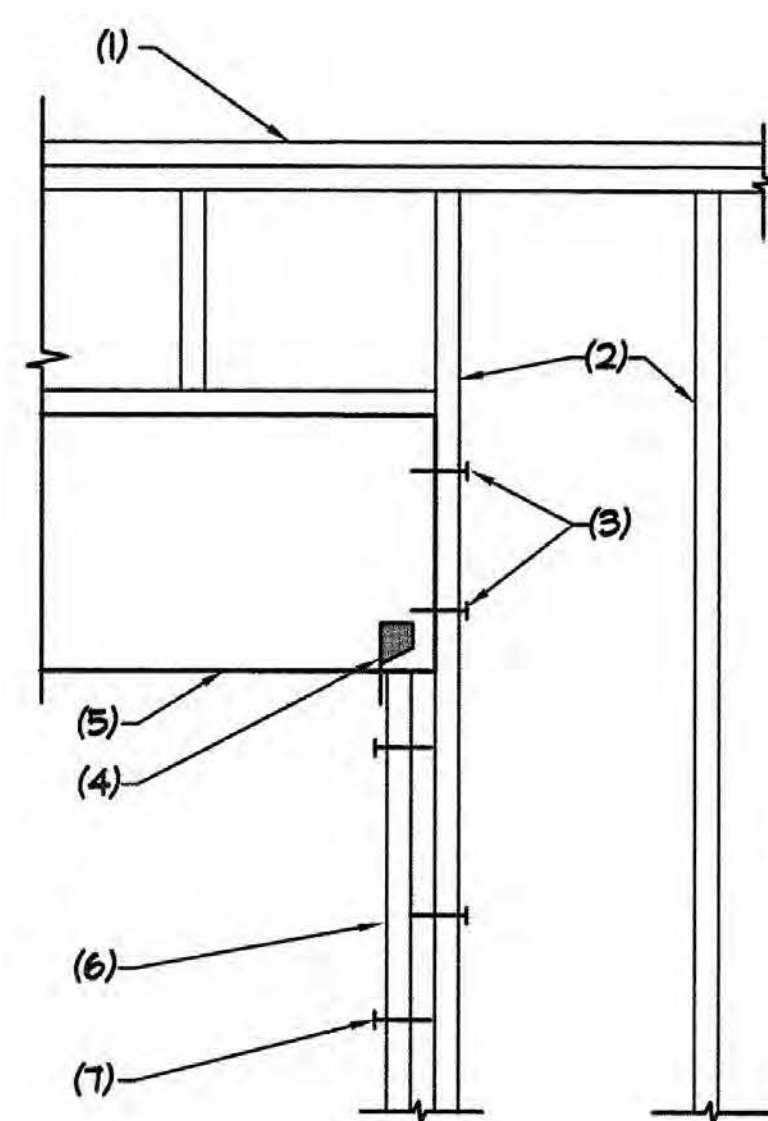
- NOTES:
1. FLYWOOD SHEATHING.
 2. EDGE NAILING - 8d AT 6" O.C.
 3. INTERMEDIATE NAILING - 8d AT 12" O.C.
 4. PREFAB WOOD TRUSSES AT 24" O.C.

- NOTES:
1. PREFABRICATED WOOD TRUSS
NOTE: MANUFACTURER TO VERIFY TRUSS CAPACITY FOR MECHANICAL LOADS - MODIFY TOP AND BOTTOM CHORDS AS REQUIRED (MAINTAIN DEPTH).
 2. DOUBLE 2x8 WITH SIMPSON HUS2-21F HANGERS EACH END AND 16d AT 12" O.C.
 3. SIMPSON HUT TYPE HANGERS.



204 TYPICAL ROOF OPENING NO SCALE

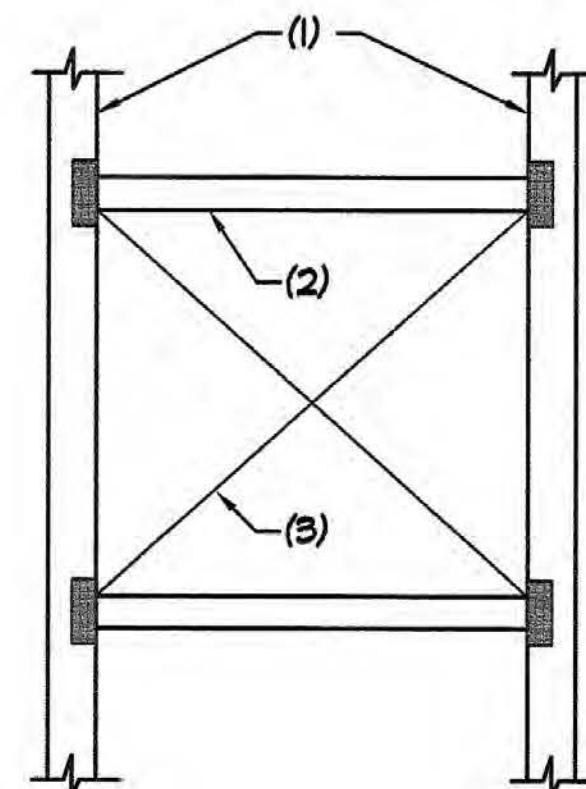
- NOTES:
1. DOUBLE 2x TOP PLATE.
 2. WOOD STUDS.
 3. 2 - 16d AT BEAM.
 4. SIMPSON H2.5 EACH SIDE OF BEAM.
 5. WOOD BEAM.
 6. 2 STUDS UNDER BEAM.
 7. 16d AT 12" O.C. STAGGERED.



207 WOOD BEAM IN STUD WALL NO SCALE

NOTE:
FRAMING ABOVE NOT SHOWN FOR CLARITY.

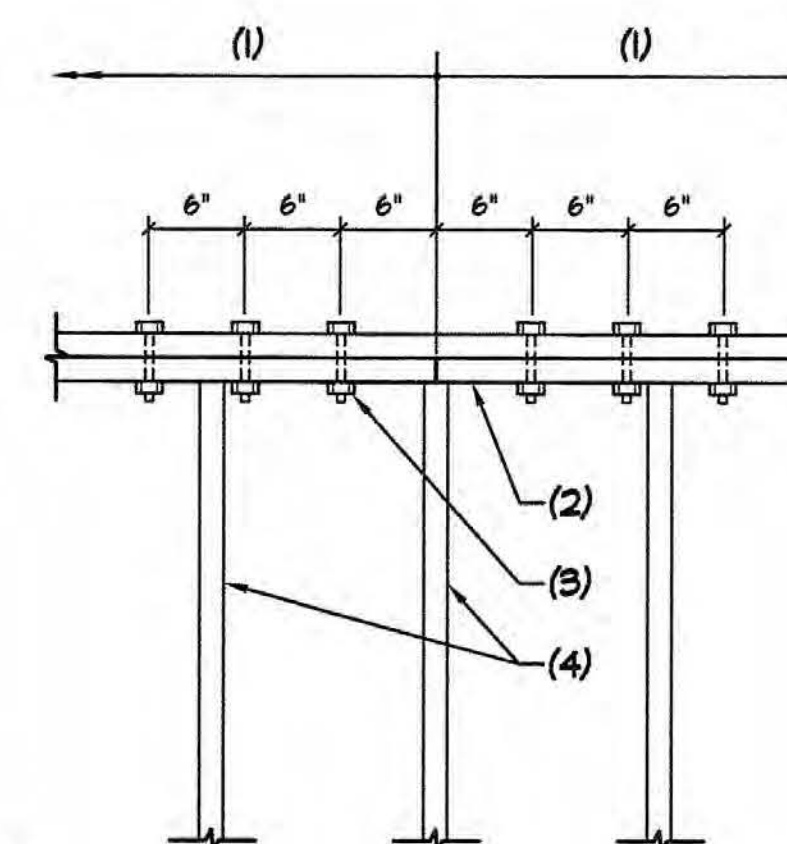
- NOTES:
1. PREFABRICATED WOOD TRUSS.
2x6 WITH SIMPSON HF26N TYPE HANGERS - TYPICAL.
 2. OPEN.



205 TYPICAL ROOF OPENING NO SCALE

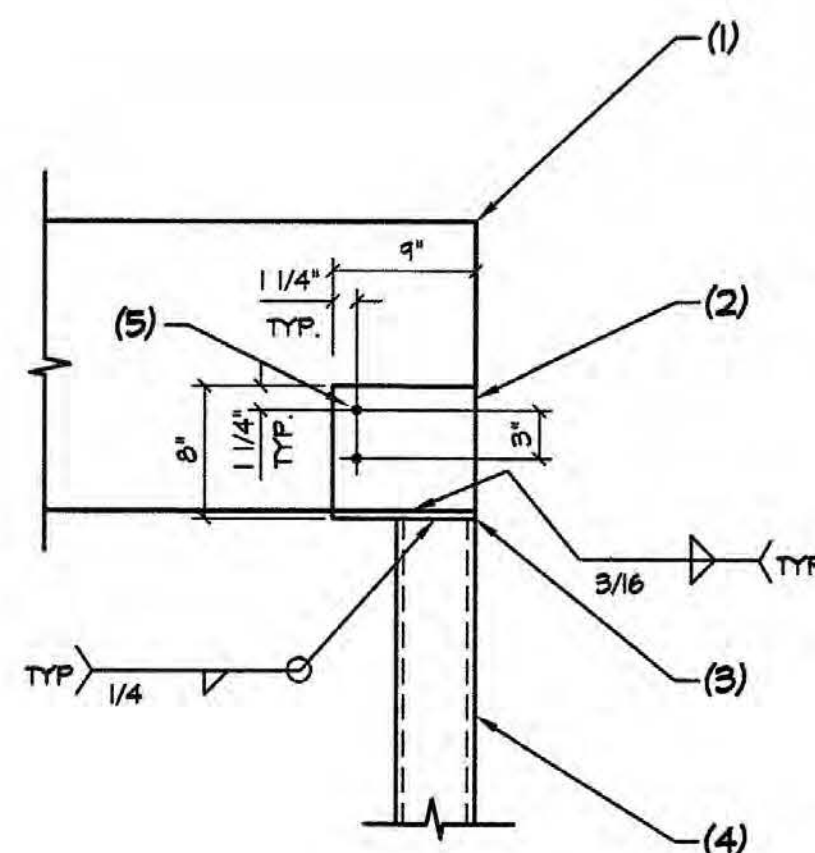
NOTE:
PLYWOOD SHEATHING NOT SHOWN FOR CLARITY.

- NOTES:
1. 6'-0" MINIMUM BETWEEN SPLICES.
 2. DOUBLE TOP PLATE - SPLICE OVER STUD ONLY.
 3. 3 - 1/2" DIA. BOLTS EACH SIDE OF SPLICE.
 4. WOOD STUDS.



202 TOP PLATE SPLICE NO SCALE

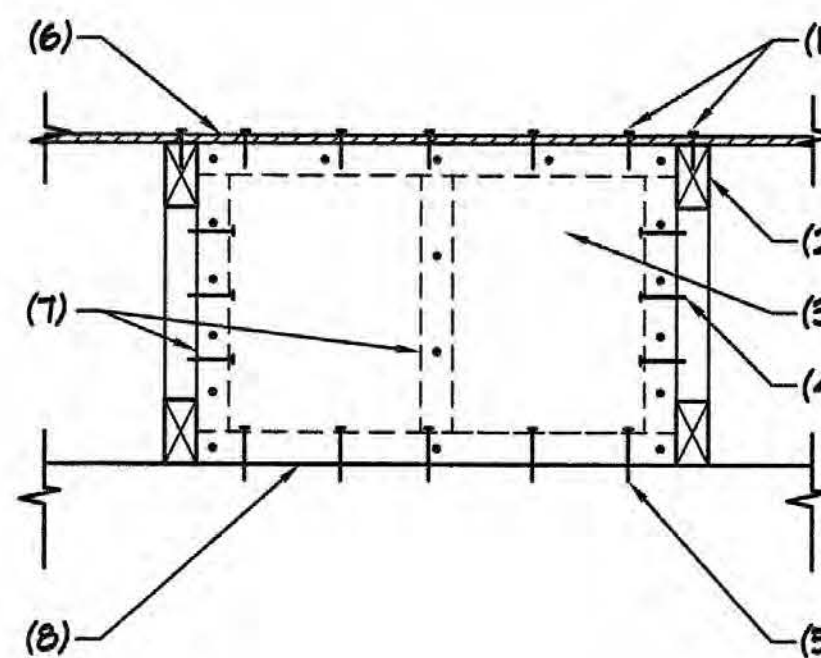
- NOTES:
1. WOOD BEAM.
 2. 1/4" STEEL PLATE EACH SIDE.
 3. 1/2" GAP PLATE.
 4. STEEL COLUMN.
 5. 2 - 3/4" DIA. BOLTS.



208 WOOD BEAM AT STEEL COLUMN NO SCALE

NOTE:
EQUIVALENT SIMPSON CCO COLUMN CAP MAY BE USED AT CONTRACTOR'S OPTION.

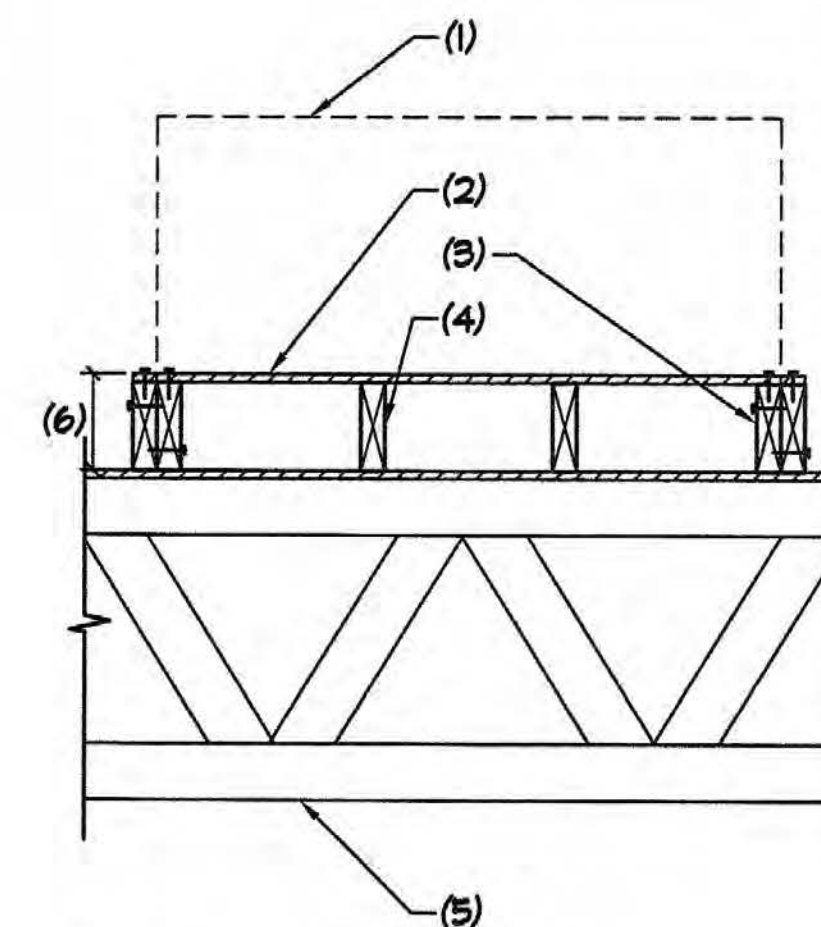
- NOTES:
1. EDGE NAILING.
 2. PREFABRICATED WOOD TRUSS.
NOTE: TRUSS MANUFACTURER SHALL PROVIDE VERTICAL WEB TO MATCH LOCATION OF SHEAR PANEL.
 3. 3/8" FLYWOOD SHEAR PANEL WITH 8" AT 6" O.C. AT PANEL EDGES AND 8d AT 12" O.C. AT INTERMEDIATE SUPPORTS.
 4. 16d AT 6" O.C. TO TRUSS VERTICAL WEB.
 5. 16d TO MATCH 'EDGE NAILING' SPACINGS.
 6. FLYWOOD SHEATHING.
 7. 2 X 4 AT FOUR SIDES AND INTERMEDIATE.
 8. TOP OF WOOD PLATE OR BEAM AS OCCURS.



206 TYPICAL PLYWOOD SHEAR PANEL NO SCALE

NOTE:
FOR CONTRACTION BELOW PANEL, SEE PLAN.

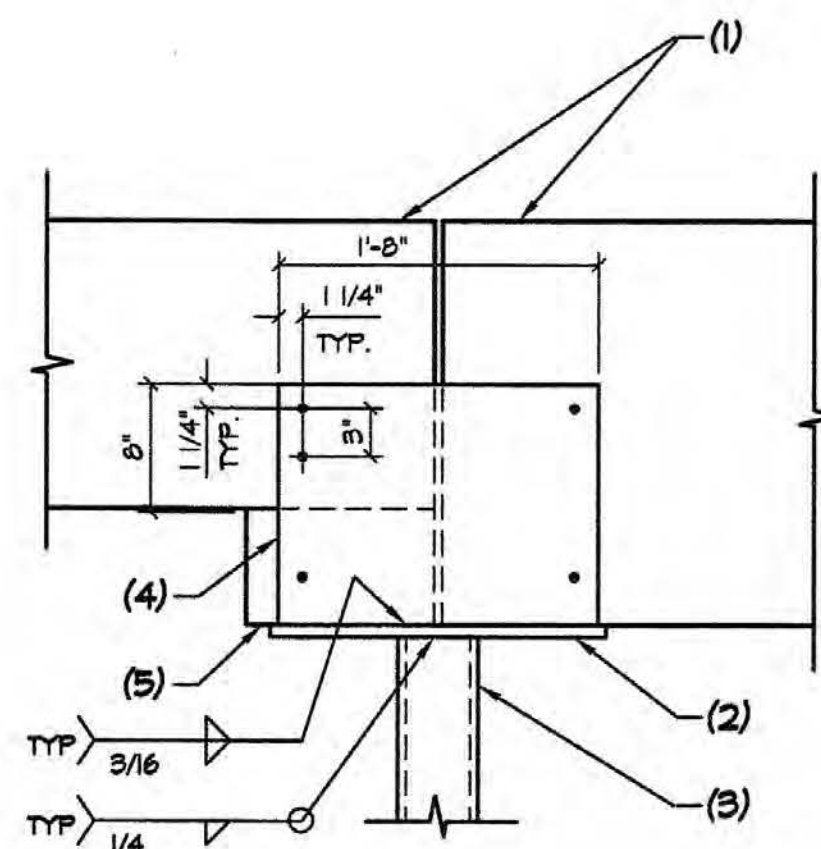
- NOTES:
1. LINE OF MECHANICAL UNIT.
 2. 1/2" PLYWOOD SHEATHING.
 3. DOUBLE 2x6 WITH 16d AT 12" O.C. STAGGERED.
 4. 2x6 AT 16" O.C. - EXTEND PLATFORM OVER 3 TRUSSES MINIMUM.
 5. WOOD TRUSSES.
 6. 5 1/2" MINIMUM.



203 MECHANICAL UNIT PLATFORM NO SCALE

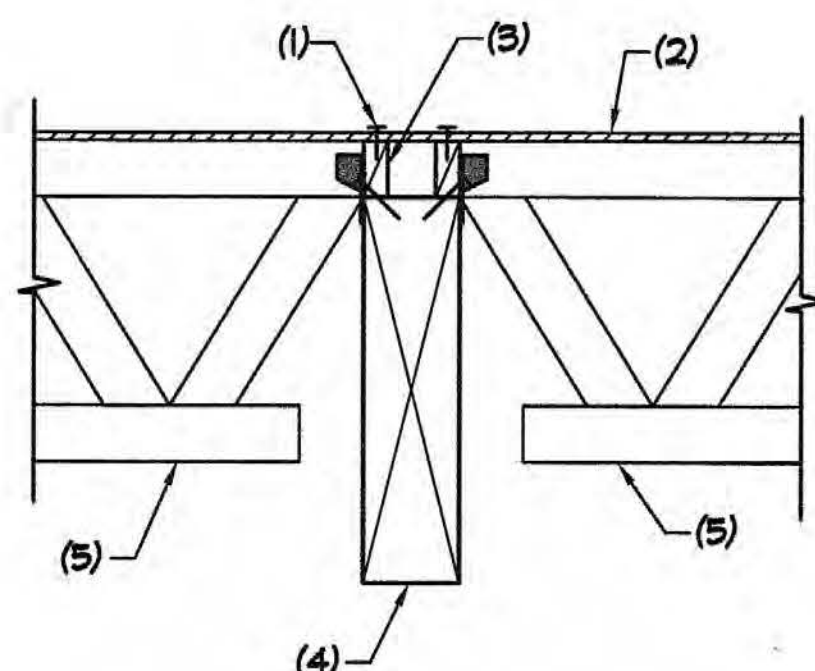
NOTE:
PLATFORM FRAMING SHALL BE RIPPED TO MAINTAIN LEVEL PLATFORM.

- NOTES:
1. WOOD BEAM.
 2. 3/4" STEEL PLATE - EXTEND 1/2" EACH SIDE OF SIDE PLATES.
 3. STEEL COLUMN.
 4. 1/4" STEEL PLATE EACH SIDE WITH 3 - 3/4" DIA. THRU-BOLTS.
 5. PROVIDE SOLID WOOD BLOCKING.



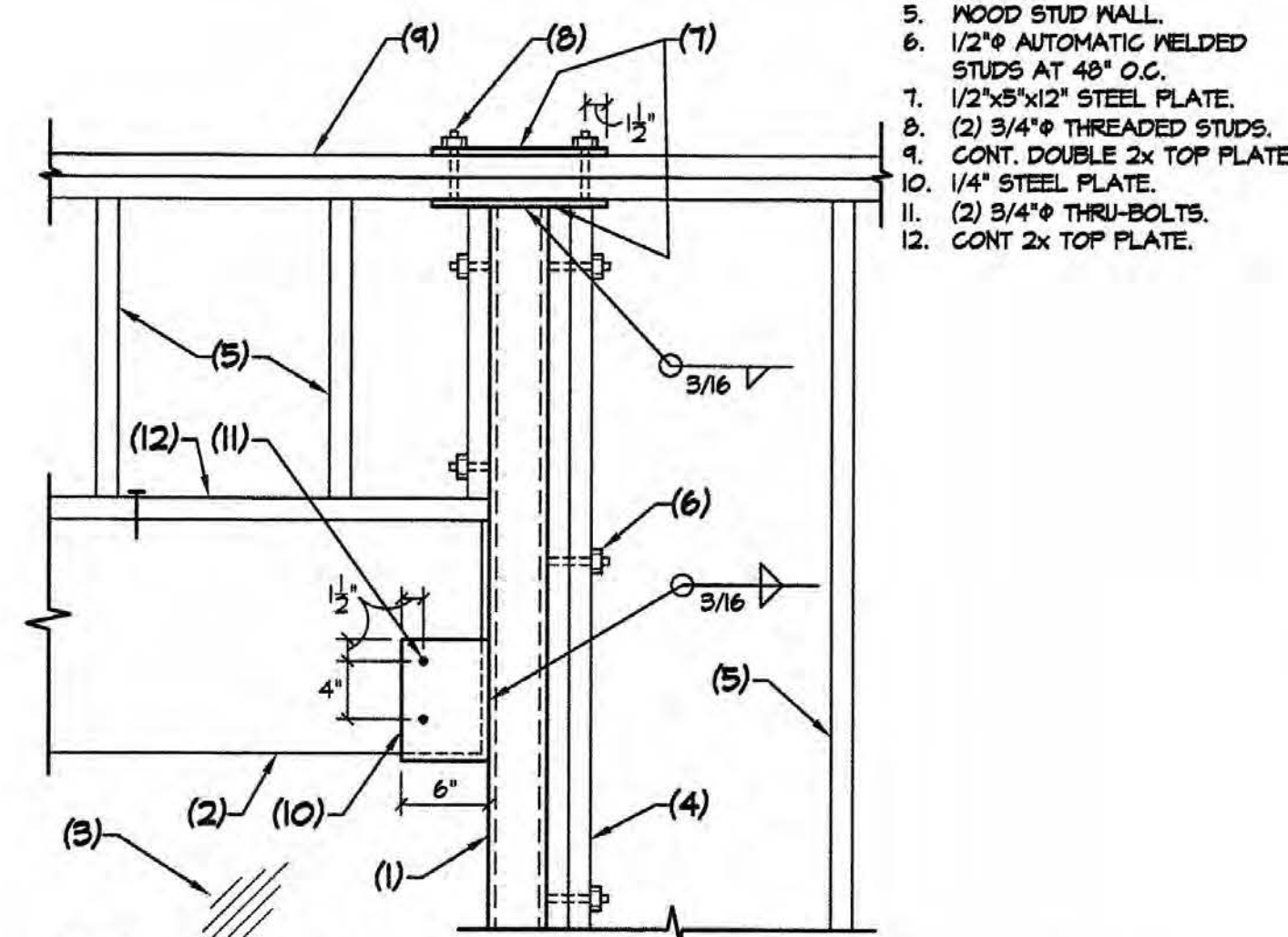
210 WOOD BEAMS AT STEEL COLUMN NO SCALE

- NOTES:
1. DOUBLE EDGE NAILING.
 2. PLYWOOD SHEATHING.
 3. 2x BLOCKING WITH 3 - 16d PER BLOCK.
 4. WOOD BEAM.
 5. TRUSS JOIST.



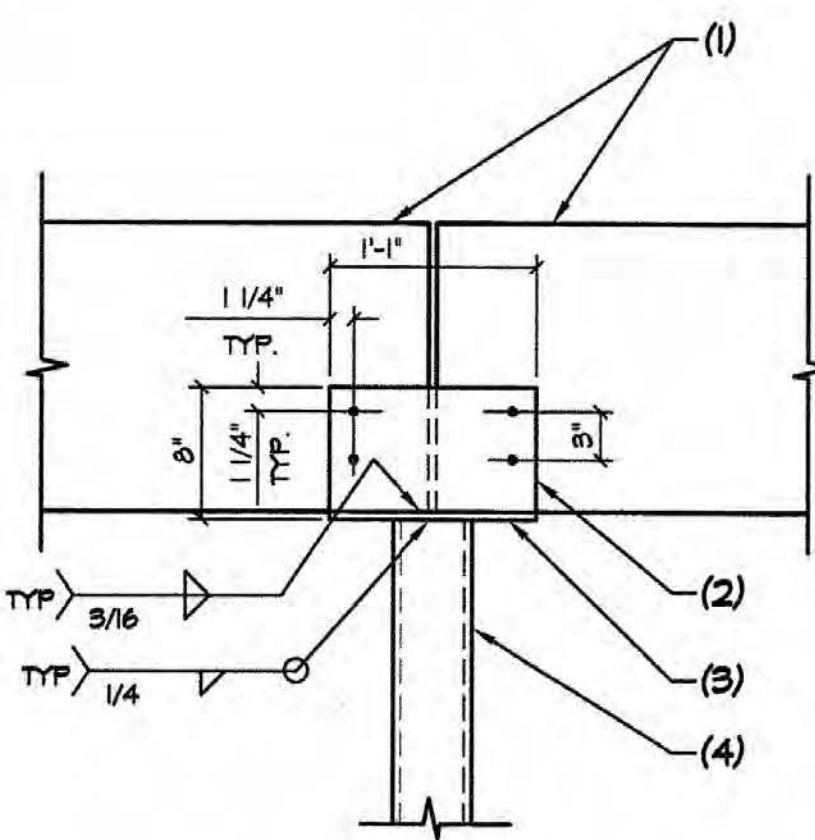
211 TRUSS JOISTS AT WOOD BEAM NO SCALE

- NOTES:
1. STEEL COLUMN.
 2. WOOD BEAM.
 3. WINDOW SYSTEM PER ARCHT. DRAWINGS.
 4. (2) 2x6.
 5. WOOD STUD WALL.
 6. 1/2" AUTOMATIC WELDED STUDS AT 48" O.C.
 7. 1/2"x5"x12" STEEL PLATE.
 8. (2) 3/4" THREADED STUDS.
 9. CONT. DOUBLE 2x TOP PLATE.
 10. 1/4" STEEL PLATE.
 11. (2) 3/4" THRU-BOLTS.
 12. CONT. 2x TOP PLATE.



212 STEEL COLUMN AT CONT. DOUBLE TOP PLATE NO SCALE

- NOTES:
1. WOOD BEAM.
 2. 1/4" STEEL SIDE PLATE WITH 4 - 3/4" DIA. THRU-BOLTS.
 3. 1/2" GAP PLATE.
 4. STEEL COLUMN.



209 WOOD BEAMS AT STEEL COLUMN NO SCALE

NOTE:
EQUIVALENT SIMPSON CCO COLUMN CAP MAY BE USED AT CONTRACTOR'S OPTION.



2635 E. Arizona Billmore Cir.
 Suite D240
 Phoenix, AZ 85028
 Phone: 602.955.9200
 Email: cast@bkunonete.com

NOTE:
PLATFORM FRAMING SHALL BE RIPPED TO MAINTAIN LEVEL PLATFORM.